



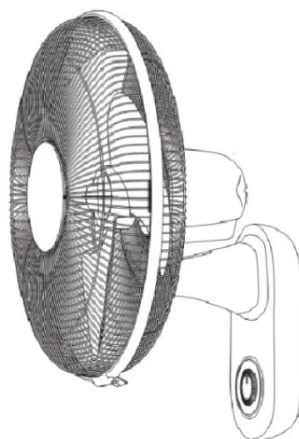
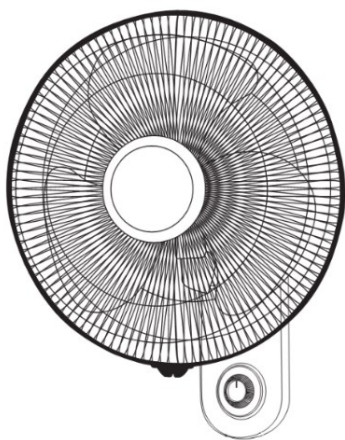
THE AIR MOVEMENT SPECIALISTS



Zephyr II

40CM WALL COOLING FAN

IMPORTANT INFORMATION & INSTALLATION INSTRUCTIONS



MODELS:

ZEP40PC – Pull Cord Operated

ZEP40R – Remote Controlled

INTRODUCTION

Thank you and congratulations on your purchase of the
Ventair Zephyr II Cooling Fan.

Please read these instructions carefully before installing and using
this product. Keep these instructions handy for future reference.

READ THESE SAFETY INSTRUCTIONS BEFORE USING THIS APPLIANCE.

IMPORTANT SAFETY INSTRUCTIONS



WARNING: WHEN USING THIS ELECTRICAL APPLIANCE, BASIC
SAFETY PRECAUTIONS SHOULD ALWAYS BE FOLLOWED TO
REDUCE THE RISK OF FIRE, ELECTRICAL SHOCK AND PERSONAL
INJURY.

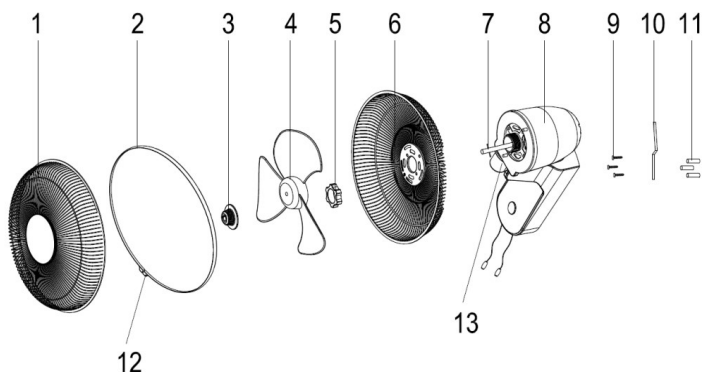
TECHNICAL SPECIFICATIONS

Rated Voltage: 220-240V~50Hz
Rated Power: 65W
Fan Weight: 3.15kg

IMPORTANT SAFETY INSTRUCTIONS CONT'D

- Use this fan only as described in this manual. Other uses not recommended may cause fire, electric shock or injury.
- This product is intended for household use **ONLY** and not for commercial, industrial or outdoor use.
- To reduce the risk of fire or electric shock: Do not place fan on windowsills, immerse any part of the unit, plug or cord in water or spray with liquids. To reduce the risk of fire or electric shock, do not use this fan with any solid-state speed control device.
- This appliance is not intended for use by persons (including children) with reduced physical, sensory or mental capabilities or lack of experience and knowledge, unless they are supervised or given instruction concerning use of the appliance by a person responsible for their safety.
- Children should be supervised to ensure that they do not play with the appliance.
- Turn the fan OFF and unplug from the outlet when not in use, when moving the fan from one location to another and before cleaning.
- Disconnecting the fan: Turn unit off using the button on the fan, then turn power off at the wall. Lastly, grip the power plug and pull it from the wall outlet. **NEVER PULL THE PLUG BY THE CORD.**
- Do not operate the fan in the presence of explosive and/or flammable fumes.
- Do not place the fan or any parts near an open flame, cooking or other heating appliances.
- Do not operate this fan: a) with a damaged cord or plug b) if the housing is damaged c) if it has dropped or damaged in any manner or d) if it malfunctions.
- Avoid contact with moving fan parts.
- The use of attachments not recommended by the manufacturer may be hazardous.
- Place the fan on a dry level surface, do not hang or mount the fan from the ceiling.
- A loose fit between the AC outlet and plug may cause electrical arcing, creating sparks and fire. Contact a qualified electrician to rectify.
- Only use on a power supply that matches what is shown on the unit's rating label.
- If the supply cord is damaged, it must be replaced by qualified persons only.
- **WARNING:** The flexible supply cord connected to the fan shall be effectively fixed to the wall.

ASSEMBLING YOUR FAN



- | | |
|--------------------|----------------------------------|
| 1. Front Grille | 8. Motor |
| 2. Grille Ring | 9. 3 x Wall Screws (ST4x25mm) |
| 3. Blade Cap | 10. Hook |
| 4. Fan Blade | 11. 3 x Wall Plugs |
| 5. Rear Grille Nut | 12. Grille locking Screw and Nut |
| 6. Rear Grille | 13. Tilt Adjustable Head |
| 7. Motor Shaft | |

1. Remove the Rear Grille Nut [5] from the motor shaft [7].
2. Insert the Rear Grille [6] onto the Motor [8] and match 2 rods on the front side of the motor to 2 holes of the Rear Grille [6] and fasten the Rear Grille [6] tightly by turning the Rear Grille Nut [5] clockwise.
3. Insert the Fan Blade [4] onto the motor shaft [7] and ensure the pin enters the fan blade slot and tighten the fan blade using the Blade Cap [3] turning anticlockwise.
4. Insert the Front Grille [1] into the slot on the Grille Ring [2] and attach both parts to the Rear Grille [6], then secure them together using the Grille Ring [2].
5. Tighten the Grille Locking Nut and Screw [12] to fix the two grilles together securely.

MOUNTING ON THE WALL

IF UNSURE, ASK SOMEONE WITH EXPERIENCE TO HELP MOUNT THE FAN.

1. Select an appropriate location (consider Power Cord length, and length of Pull Cords) and fix the hook [10] onto a strong wall (or locate a stud behind plaster boards) with the three wall plugs [11] and screws [9] - you will first need to drill holes in the wall that match the hook [10].
2. Mount the fan on the hook and then plug in the unit.
3. If the power cord is hanging loose between the fan and the power outlet, make sure it cannot touch or obstruct fan blade rotation or fan oscillation at any time.

WARNING: The flexible supply cord connected to the fan shall be effectively fixed to the wall.

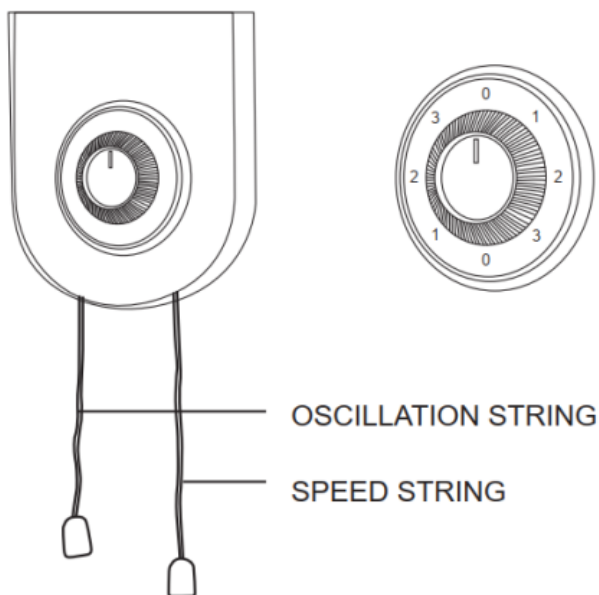
OPERATION:

- Please ensure the unit is in the (OFF) position before plugging into the power socket.
- The unit should be tightly fixed on the wall.
- Avoid overloading the circuit. Do not plug other high wattage products into the same power socket.

TILT ADJUSTMENT:

- To adjust the vertical angle of the fan, turn it off then grip top and bottom of the grille firmly and tilt.

OPERATING INSTRUCTIONS (PULL CORD VERSION)



OSCILLATION STRING:

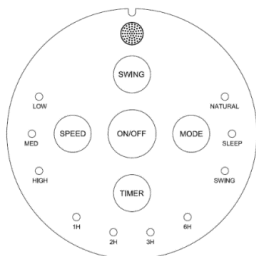
- Pull on the oscillation string to switch Oscillation on/off.

FAN SPEED STRING:

- Pull on the speed string to switch the fan on. At first start-up the fan will operate at low speed.
- Pull the same string again until desired fan speed is reached. Choose between Low (1), Medium (2) and High (3) speeds.

OPERATING INSTRUCTIONS (REMOTE VERSION)

DISPLAY & CONTROL PANEL



TIMER:

When the unit is in use, you can set the timer to turn off the fan after the specified time. Press this button repeatedly to increase the timer setting in 1-hour increments (up to a maximum of 12 hours) as indicated on the indicator display. After 3 seconds, the timer starts. Once the timer runs out, the unit will turn off.

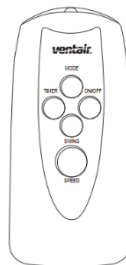
ON/OFF:

Press this button to start the fan at MED Speed, in Normal Mode. Press again to turn off the fan.

MODE:

Press to select Natural Breeze Mode, Sleep Mode or Normal Mode (as indicated on the display).

REMOTE CONTROL



NATURAL MODE:

Fan speed varies automatically to simulate a breeze, and NATURAL indicator turns on.

SLEEP MODE:

In 'SLEEP MODE' the fan operates much like 'Natural Mode' however the speed is periodically reduced every 30 minutes, ie; Maximum speed for 30 minutes, Medium for 30 minutes then Low for 30 minutes, where it will continue to run until turned off manually or via set timer. SLEEP indicator turns on.

NORMAL MODE:

Fan operates at the speed selected with the "SPEED" button. NO indicator light on NATURAL or SLEEP.

SPEED:

Press this button to cycle through fan speeds from LOW-MED-HIGH.

SWING:

Press to switch Oscillation on/off.

CLEANING INSTRUCTIONS

CAUTION:

- *Always switch off and unplug the fan before cleaning.*
 - *Do not use harsh detergents, chemical cleaners or solvents as they may damage the finish of the components.*
1. Loosen the Grille Locking Screw and remove the Grille Ring to detach the Front Grille.
 2. Use a soft duster or a rag to dust off all the surfaces.
 3. Wipe all the external parts with a soft, damp (not wet) cloth dipped in mild soapy water. **CAUTION: Ensure that water does NOT get into the Motor.**
 4. Use a dry cloth to dry the fan before switching on again.
 5. Make sure that the fan is completely assembled before switching on again.

STORAGE AND DISPOSAL

If you do not plan to use the fan for extended periods of time, it is recommended that it is cleaned and stored (preferably in its original packaging) in a cool, dry place. Do not dispose of electrical products with household waste. Please check with your local council for advice on disposal or recycling. If electrical appliances are disposed of in landfills or dumps, hazardous substances can leak into the groundwater and get into the food chain, damaging your health and well-being.

WARRANTY

12-month replacement warranty. See Warranty Card for additional information.



4 Capital Place, Carrum Downs VIC 3201

W: www.ventair.com.au

E: support@ventair.com.au

P: 03 9775 0556