

## FIREFLY2 LED Emergency Light

The affordable and reliable LED emergency light with Lithium Iron Phosphate battery  
One box solution with a fully integrated assembly

- Compliant to AS2293
- Recessed mount white finish
- Optional surface mounting kit



80

CRI



IP20

Ingress Protection Rating



0 - 40°C

Operating Temperature



Non - Dimmable

Dimming



50,000hrs (L70/B50)

Lifetime



3 Years

Warranty

CODE	SYSTEM POWER	EXIT LUMEN	DIMENSIONS	LUMINAIRE COLOUR	CLASSIFICATION
FFRLED2	2W	174lm	L140 x W140 x H48.50mm	White	C0/C180 :C50 C90/C270 : C40
FFRLEDBK2	2W	174lm	L140 x W140 x H48.50mm	Black	C0/C180 :D32 C90/C270 : D32

EMERGENCY MODE LUMEN	BATTERY	BATTERY VOLTAGE	BATTERY CAPACITY	TESTING SYSTEM
174lm	LiFePO4	6V	1200mA	Manual

ACCESSORY CODE	DESCRIPTION
FFSLEDKITWH	SURFACE MOUNT KIT WHITE EXCLUDING FFRLED2
FFSLEDKITBK	SURFACE MOUNT KIT BLACK EXCLUDING FFRLEDBK2
BATPK1200/4L41	BATTERY PACK LIFEPO4 4CELL 6.4V 1200MAH (2P2S) SBS PCB+PLUG

### AS/NZS 2293.1:2018 Classification Table

ALLOWABLE LUMINAIRE MOUNTING HEIGHT (M)	LUMINAIRE MAXIMUM SPACING FOR EACH PLAN (M)		
	C0	C90/C270	C180
2.1	11.5	11.5	11.5
2.4	13.2	13.2	13.2
2.7	14.8	14.8	14.8
3	16.5	16.5	16.5
3.3	17.6	17.6	17.6
3.6	18	18	18
4	18.5	18.5	18.5
4.5	19	19	19
5	19.5	19.5	19.5
6	20.1	20.1	20.1

FFRLED2, FFRLEDBK2

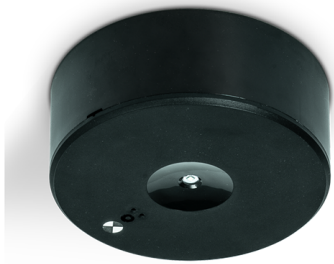


FFRLEDBK2



(Surface Mount Kit Sold Separately)

FFRLED2



(Surface Mount Kit Sold Separately)

FFRLEDBK2

Accessories

---



FFSLEDKITWH



FFSLEDKITBK