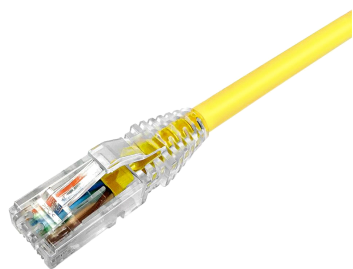


NPC6AUZDB-YL



NPC RJ45 Patch Cord, category 6A, Unshielded, LSZH, Yellow

- High-performance patch cords exceeding industry standards supporting NETCONNECT channel specifications
- Standardized transparent, slim-line boots provides consistent patch cord appearance and supports highest density applications
- Colored clips are available to fit the transparent boot, eliminating the need of multiple colors for matching every jacket color
- Colored pull latch tabs are available for easier plug release handling from the modular jack

Product Classification

Portfolio	NETCONNECT®
Product Series	NPC
Product Type	Twisted pair patch cord
Regional Availability	EMEA

Dimensions

Cord Length, maximum	100 m 999 cm
Cord Length, minimum	1 m 50 cm
Diameter Over Jacket	7.24 mm 0.29 in

Electrical Specifications

ANSI/TIA Category	6A
--------------------------	----

Environmental Specifications

Environmental Space	Low Smoke Zero Halogen (LSZH)
Operating Temperature	-20 °C to +60 °C (-4 °F to +140 °F)
Safety Standard	UL 1863

General Specifications

Cable Type	U/UTP (unshielded)
Interface, connector A	RJ45 plug
Interface, connector B	RJ45 plug
Jacket Color	Yellow
Interface Feature, connector A	Standard
Interface Feature, connector B	Standard
Package Quantity	1
Pairs, quantity	4

NPC6AUZDB-YL

Mechanical Specifications

Conductor Type	Solid
Conductor Gauge, solid	24 AWG
Plug Insertion Life, minimum	750 times
Wiring	T568B

Regulatory Compliance/Certifications

Agency	Classification
RoHS 2011/65/EU	Compliant

Included Products

- CC884014344/BU | CC6AZH YEL C6A 4/24 SO U/UTP RL BULK (Product Component—not orderable) — CC6AZH Category 6A U/UTP Cable, non-plenum, yellow jacket, 4 pair count, bulk length, reel
- 6-2843008-1 | MP-6AU-Plug-B-1 — Modular Plug, Category 6A/6, Unshielded, Cond Insulation OD - 0.79mm, 100 pcs
- 2843018-3 | MP-6AU-Boot-71-1 — Integrated Boot and Pair Manager for MP-6AU, 71 mm, transparent