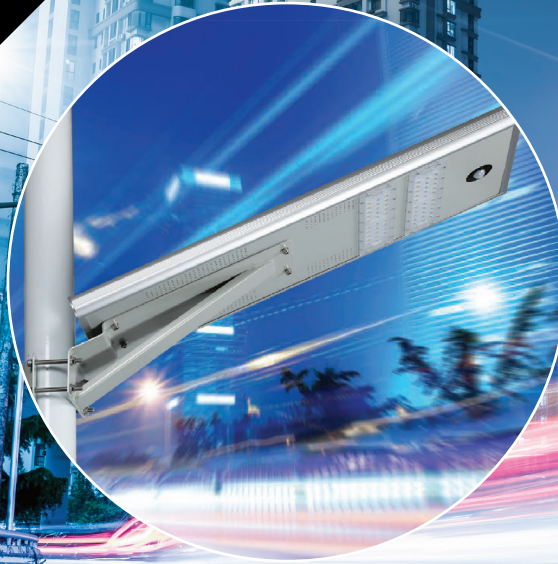


LUCE SOLAR - 30W



Product Overview

Reliable as the sun -
High output External
LED lighting

Product Applications

- Street Lighting
- Park Lighting
- Roadway Lighting
- Fence Lighting
- Pathway Lighting
- Campus Lighting
- Ramp Lighting
- Pedestrian Lighting
- Remote Area Lighting
- Private Road Lighting
- Farm & Ranch Lighting



Motion
detection



No wiring
required



Long operating
hours



Daylight
sensing



Zero
energy cost



IP65
Weatherproof



Proudly Australian
owned and operated.

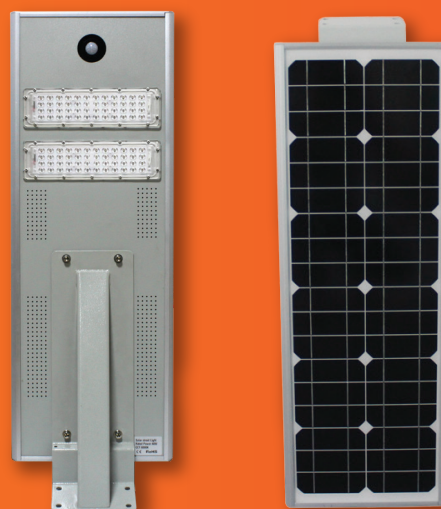
Main Features

Product Name:	LTC Luce Solar 30W
LED Chips:	Philips SMD3030
Solar panel:	18V/40W (monocrystalline silicon)
Battery:	12.6V, 22AH Li-battery
Discharge Time:	Full power 15 hours, Half power 30 hours
Charge Time:	6 hours
Mounting Height:	5-6 metres
Working time:	Light 10 to 12 hours every day, sustainable 3-5 rainy day
Switching mode:	Time control + light sensor control + motion sensor control
Light body material:	Aluminium alloy
Size:	L 900mm X W 300mm X H 44mm

Luce Solar light fitting and solar panel.

The Luce solar is an effective, environmentally friendly, outdoor lighting solution. With a 30W power output and lifespan of approx 25 years*

No wiring, 100% solar powered.



Contact Us

LTC Head Office:

Sales: 1300 832 372

Email: sales@lighttc.com.au

Admin: 1300 832 372

Email: admin@lighttc.com.au

Jason McCoy

Mobile: 0439 039 142

Email: JasonM@lighttc.com.au



Address:

251 Rawson Street,
Auburn, NSW. 2144. Australia.

Website: www.lighttc.com.au