



## EVOLUTION RANGE - DISTRIBUTION BOARDS

### Features:

- Suitable for 6kA and 10kA GE Redline and Contractor range protection devices.
- Available in IP43, IP65 and IP66 dust and waterproofing.
- Rugged welded construction with gutters on all models.
- Full size gland plates top and bottom on E43 and E65 models.
- Interchangeable door hinging left or right changeable on site. Doors open up to 120°.
- Hinged escutcheon with quarter turn locks.
- Can be easily converted to main switch at bottom by rotating internals.
- All E43 and E65 models are available in RAL7032 Grey or RAL2000 Orange powdercoat.
- E66 stainless steel models are unpainted.
- Chassis type tested 20kA for 0.1s



## EVOLUTION RANGE

All models include a machine injected continuous polyurethane gasket which provides excellent sealing. Tested to comply with the requirements of AS/NZS3000:2007 Clause 2.9.2.5 (h)(1) for use as a smoke seal in a required exit.



Uses new 3G chassis system for split chassis when light and power metering or load shedding is required.

Removable mounting plate to allow equipment to be mounted prior to installation of DB.

All internal components are common to all ranges. This simplifies stocking and ordering for switchboard manufacturers and customisers. Many accessories are also common to Elsteel BM range enclosures



Closeup photo of gutter and welding detail



Wide range of header boxes can be mounted above or below for additional equipment.



Several main switch options including 250A MCCB Mainswitch for cascading up to 30kA using 6kA outgoers



## EVOLUTION E43

### IP Rating:

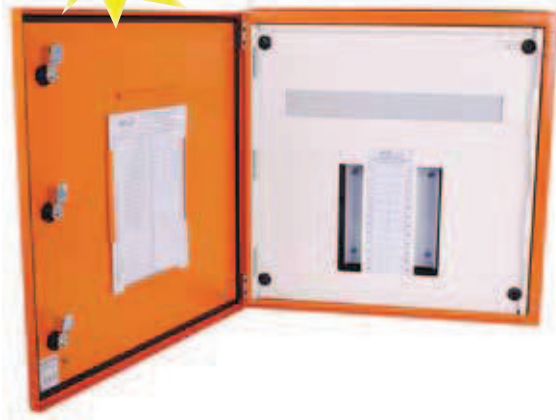
- IP43.

### Material:

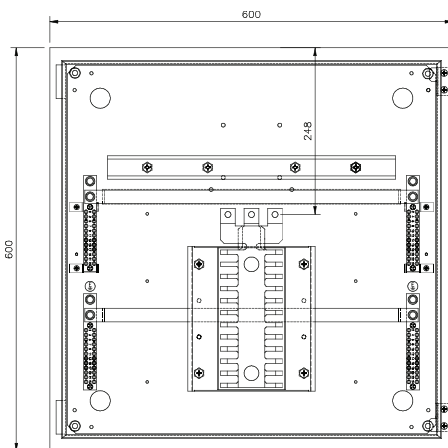
- 1.0mm, 1.2mm Mild steel.

### Gland Plates:

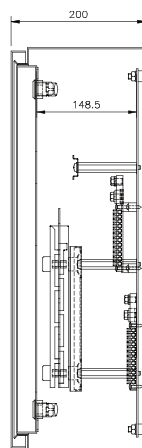
- Full size, top and bottom.



E43A24



FRONT VIEW (ESCUTCHEON AND DOOR OMITTED)



SECTION A-A

Poles	Height (mm)	DIN Accessory spaces	Part No.	
			Grey	Orange
<b>E43 Distribution Board NO MAINSWITCH</b>				
12	600	23	E43G12	E43A12
18	600	23	E43G18	E43A18
24	600	23	E43G24	E43A24
36	800	23	E43G36	E43A36
48	800	23	E43G48	E43A48
60	1000	23	E43G60	E43A60
72	1000	23	E43G72	E43A72
84	1200	23	E43G84	E43A84
96	1200	23	E43G96	E43A96

<b>E43 Distribution Board WITH MAINSWITCH</b>				
12	600	18	E43G12J250	E43A12J250
18	600	18	E43G18J250	E43A18J250
24	600	18	E43G24J250	E43A24J250
36	800	18	E43G36J250	E43A36J250
48	800	18	E43G48J250	E43A48J250
60	1000	18	E43G60J250	E43A60J250
72	1000	18	E43G72J250	E43A72J250
84	1200	18	E43G84J250	E43A84J250
96	1200	18	E43G96J250	E43A96J250

<b>E43 Distribution Board WITH MAINSWITCH and BOTTOM AUXILIARY RAIL</b>				
12	800	41	E43G12J250X	E43A12J250X
24	800	41	E43G24J250X	E43A24J250X
36	1000	41	E43G36J250X	E43A36J250X
48	1000	41	E43G48J250X	E43A48J250X
60	1200	41	E43G60J250X	E43A60J250X
72	1200	41	E43G72J250X	E43A72J250X

<b>E43 Distribution Board WITH FE MAINSWITCH</b>				
12	600	16	E43G12FE250	E43A12FE250
18	600	16	E43G18FE250	E43A18FE250
24	600	16	E43G24FE250	E43A24FE250
36	800	16	E43G36FE250	E43A36FE250
48	800	16	E43G48FE250	E43A48FE250
60	1000	16	E43G60FE250	E43A60FE250
72	1000	16	E43G72FE250	E43A72FE250
84	1200	16	E43G84FE250	E43A84FE250
96	1200	16	E43G96FE250	E43A96FE250

## EVOLUTION E65

### IP Rating:

- IP65.

### Material:

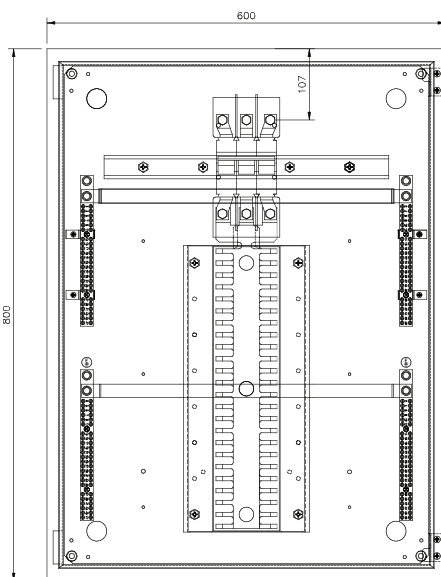
- 1.5mm Mild steel.

### Gland Plates:

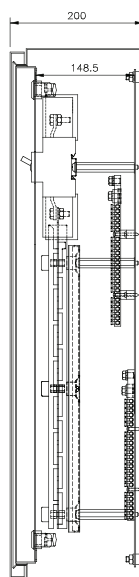
- Full size, top and bottom.



E65G48J250



FRONT VIEW (ESCUTCHEON AND DOOR OMITTED)



SECTION A-A

Poles	Height (mm)	DIN Accessory spaces	Part No.	Part No.
			Grey	Orange
<b>E43 Distribution Board NO MAINSWITCH</b>				
12	600	23	E65G12	E65A12
18	600	23	E65G18	E65A18
24	600	23	E65G24	E65A24
36	800	23	E65G36	E65A36
48	800	23	E65G48	E65A48
60	1000	23	E65G60	E65A60
72	1000	23	E65G72	E65A72
84	1200	23	E65G84	E65A84
96	1200	23	E65G96	E65A96

### E65 Distribution Board WITH MAINSWITCH

12	600	18	E65G12J250	E65A12J250
18	600	18	E65G18J250	E65A18J250
24	600	18	E65G24J250	E65A24J250
36	800	18	E65G36J250	E65A36J250
48	800	18	E65G48J250	E65A48J250
60	1000	18	E65G60J250	E65A60J250
72	1000	18	E65G72J250	E65A72J250
84	1200	18	E65G84J250	E65A84J250
96	1200	18	E65G96J250	E65A96J250

### E65 Distribution Board WITH MAINSWITCH and BOTTOM AUXILIARY RAIL

12	800	41	E65G12J250X	E65A12J250X
24	800	41	E65G24J250X	E65A24J250X
36	1000	41	E65G36J250X	E65A36J250X
48	1000	41	E65G48J250X	E65A48J250X
60	1200	41	E65G60J250X	E65A60J250X
72	1200	41	E65G72J250X	E65A72J250X

### E65 Distribution Board WITH FE MAINSWITCH

12	600	16	E65G12FE250	E65A12FE250
18	600	16	E65G18FE250	E65A18FE250
24	600	16	E65G24FE250	E65A24FE250
36	800	16	E65G36FE250	E65A36FE250
48	800	16	E65G48FE250	E65A48FE250
60	1000	16	E65G60FE250	E65A60FE250
72	1000	16	E65G72FE250	E65A72FE250



Distributor



## EVOLUTION E66

### IP Rating:

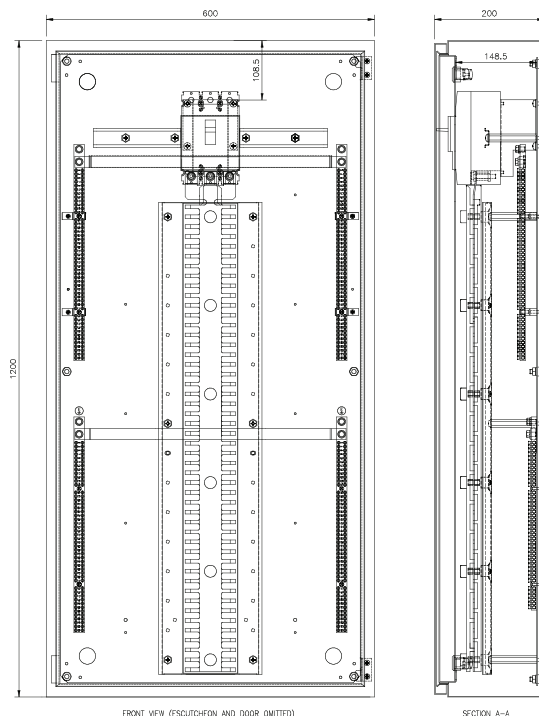
- IP66.

### Material:

- 1.2mm ( $\leq 600h$ ) or 1.6mm ( $> 600h$ )  
AISI 316 Stainless Steel.

### Gland Plates:

- Full size, top and bottom.



FRONT VIEW (SCUTCHION AND DOOR OMITTED)

SECTION A-A

Poles	Height (mm)	DIN Accessory spaces	Part No. SS
<b>SS Distribution Board NO MAINSWITCH</b>			
12	600	23	<b>E66S12</b>
18	600	23	<b>E66S18</b>
24	600	23	<b>E66S24</b>
36	800	23	<b>E66S36</b>
48	800	23	<b>E66S48</b>
60	1000	23	<b>E66S60</b>
72	1000	23	<b>E66S72</b>
84	1200	23	<b>E66S84</b>
96	1200	23	<b>E66S96</b>

### SS Distribution Board WITH MAINSWITCH

12	600	18	<b>E66S12J250</b>
18	600	18	<b>E66S18J250</b>
24	600	18	<b>E66S24J250</b>
36	800	18	<b>E66S36J250</b>
48	800	18	<b>E66S48J250</b>
60	1000	18	<b>E66S60J250</b>
72	1000	18	<b>E66S72J250</b>
84	1200	18	<b>E66S84J250</b>
96	1200	18	<b>E66S96J250</b>

### SS Distribution Board WITH MAINSWITCH and BOTTOM AUXILIARY RAIL

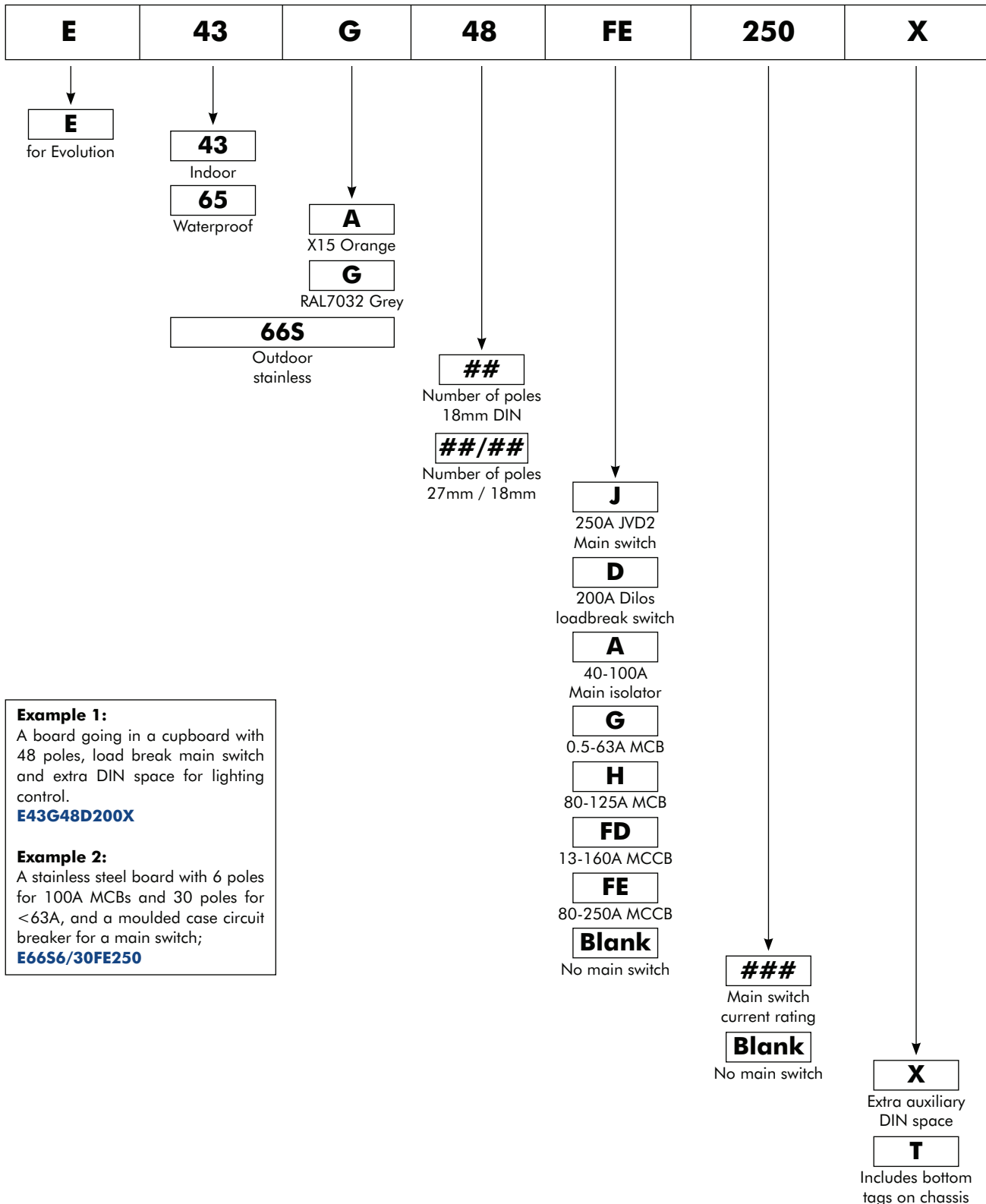
12	800	41	<b>E66S12J250X</b>
24	800	41	<b>E66S24J250X</b>
36	1000	41	<b>E66S36J250X</b>
48	1000	41	<b>E66S48J250X</b>
60	1200	41	<b>E66S60J250X</b>
72	1200	41	<b>E66S72J250X</b>

### SS Distribution Board WITH FE MAINSWITCH

12	600	16	<b>E66S12FE250</b>
18	600	16	<b>E66S18FE250</b>
24	600	16	<b>E66S24FE250</b>
36	800	16	<b>E66S36FE250</b>
48	800	16	<b>E66S48FE250</b>
60	1000	16	<b>E66S60FE250</b>
72	1000	16	<b>E66S72FE250</b>
84	1200	16	<b>E66S84FE250</b>
96	1200	16	<b>E66S96FE250</b>

## OTHER CONFIGURATIONS

The Evolution range has been designed with so much flexibility that it would be impossible to list every configuration available. The numbering scheme below can be used to define configurations not listed on pages 28 to 30.



### Example 1:

A board going in a cupboard with 48 poles, load break main switch and extra DIN space for lighting control.

**E43G48D200X**

### Example 2:

A stainless steel board with 6 poles for 100A MCBs and 30 poles for <63A, and a moulded case circuit breaker for a main switch;

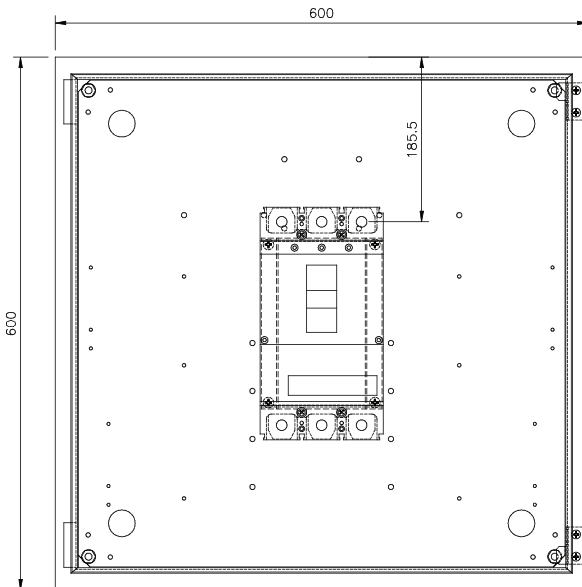
**E66S6/30FE250**



Distributor



## HEADER BOXES



FRONT VIEW (ESCUTCHEON AND DOOR OMITTED)

	Function	Height (mm)	Part No. Grey	Part No. Orange
<b>IP43 Header Boxes</b>				
Extra DIN Space	1 x 23P rows	400	<b>E43GDIN</b>	<b>E43ADIN</b>
	2 x 23P rows	400	<b>E43GDIN2</b>	<b>E43ADIN2</b>
	3 x 23P rows	600	<b>E43GDIN3</b>	<b>E43ADIN3</b>
	4 x 23P rows	800	<b>E43GDIN4</b>	<b>E43ADIN4</b>
	5 x 23P rows	1000	<b>E43GDIN5</b>	<b>E43ADIN5</b>
	6 x 23P rows	1200	<b>E43GDIN6</b>	<b>E43ADIN6</b>
Off-Load	100A ASTM	400	<b>E43GA100</b>	<b>E43AA100</b>
Isolator	JVD2-250 Switch	400	<b>E43GJ250</b>	<b>E43AJ250</b>
Load Break	200A Dilos 2	400	<b>E43GD200</b>	<b>E43GD200</b>
	315A Dilos 3	600	<b>E43GD315</b>	<b>E43GD315</b>
Switch	2-63A	400	<b>E43GG63<sup>(1)</sup></b>	<b>E43AG63<sup>(1)</sup></b>
	80A-125A	400	<b>E43GH125<sup>(1)</sup></b>	<b>E43AH125<sup>(1)</sup></b>
(Supply Capacity)	125-250A	400	<b>E43GFE250<sup>(1)</sup></b>	<b>E43AFE250<sup>(1)</sup></b>
Control Device)	250-400A <sup>(2)</sup>	600	<b>E43GFG400</b>	<b>E43AFG400</b>
	400-630A <sup>(2)</sup>	600	<b>E43GFG630</b>	<b>E43AFG630</b>

Notes;

(1) Change last digits for lower rated currents.

(2) For current ratings greater than 350A, confirm chassis and earth and neutral bars in distribution section are up-rated as well, or suitably protected from overload.

	Function	Height (mm)	Part No. Grey	Part No. Orange
<b>IP65 Header Boxes</b>				
Extra DIN Space	1 x 23P rows	400	<b>E65GDIN</b>	<b>E65ADIN</b>
	2 x 23P rows	400	<b>E65GDIN2</b>	<b>E65ADIN2</b>
	3 x 23P rows	600	<b>E65GDIN3</b>	<b>E65ADIN3</b>
	4 x 23P rows	800	<b>E65GDIN4</b>	<b>E65ADIN4</b>
	5 x 23P rows	1000	<b>E65GDIN5</b>	<b>E65ADIN5</b>
	6 x 23P rows	1200	<b>E65GDIN6</b>	<b>E65ADIN6</b>
Off-Load	100A ASTM	400	<b>E65GA100</b>	<b>E65AA100</b>
Isolator	JVD2-250 Switch	400	<b>E65GJ250</b>	<b>E65AJ250</b>
Load Break	200A Dilos 2	400	<b>E65GD200</b>	<b>E65GD200</b>
	315A Dilos 3	600	<b>E65GD315</b>	<b>E65GD315</b>
Switch	2-63A	400	<b>E65GG63<sup>(1)</sup></b>	<b>E65AG63<sup>(1)</sup></b>
	80A-125A	400	<b>E65GH125<sup>(1)</sup></b>	<b>E65AH125<sup>(1)</sup></b>
(Supply Capacity)	125-250A	400	<b>E65GFE250<sup>(1)</sup></b>	<b>E65AFE250<sup>(1)</sup></b>
Control Device)	250-400A <sup>(2)</sup>	600	<b>E65GFG400</b>	<b>E65AFG400</b>
	400-630A <sup>(2)</sup>	600	<b>E65GFG630</b>	<b>E65AFG630</b>

Notes;

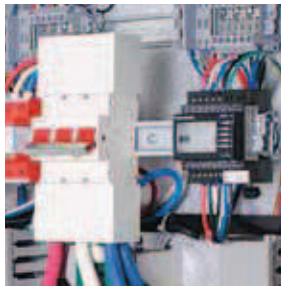
(1) Change last digits for lower rated currents.

(2) For current ratings greater than 350A, confirm chassis and earth and neutral bars in distribution section are up-rated as well, or suitably protected from overload.

## CONTROL AND METERING KITS



DGMTCI275



kWh Metering Options



RL-ELC3PE



E-RCDSW6E

### SURGE PROTECTION

Description	Part No.
3P+N surge arrester IMAX (L+PE) 65kA T2 protection with Integral HRC backup fuse	<b>DGMTCI275</b>
1P+N In-line surge arrester for final subcircuits T3 fine protection	<b>DRM2P255</b>
3P+N In-line surge arrester for final subcircuits T3 fine protection	<b>DRM4P255</b>

### EMERGENCY LIGHTING TEST SWITCH

Description	Current	Volt.	No. of Circuits	Part No.
<b>Open type -</b> for use in distribution boards	25A	240	4	<b>ELTS4</b>
<b>Standalone -</b> with key selector switch	25A	240	4	<b>ELTSK4</b>

### METERING

Description	Rating	Part No.
kWh Metering option includes Socomec	100A	<b>EQ-METER100</b>
Diris A10 multifunction meter, 3-in-1	160A	<b>EQ-METER160</b>
CT block, shorting links, fuses and all mounting equipment.	250A	<b>EQ-METER250</b>
	400A	<b>EQ-METER400</b>

### EXTERNAL LIGHTING CONTROL

External Lighting Control Circuit 3 circuits Complete with Day/Week Digital timer	<b>RL-ELC3</b>
External Lighting Control, 3 circuits c/w Day/Week Digital timer and PE cell	<b>RL-ELC3PE</b>

### RCD TEST SWITCHES

Description	Part No.
6 position + off cam switch including protection MCB and DIN mount GPO	<b>E-RCDSW6</b>
11 position + off cam switch including protection MCB and DIN mount GPO	<b>E-RCDSW11</b>
6 position + off cam switch including protection MCB and DIN mount GPO Switches both Active and Neutral	<b>E-RCDSW6N</b>
Standalone kit for Retrofit applications 6 position + off	<b>E-RCDSW6E</b>

For applications with higher number of circuits, contact your local IPD Sales office.



## ACCESSORIES



E65G72J250X  
Showing additional auxiliary rail

### HANDLES AND THREE POINT LOCKING

Description	Height	Part No.
<b>E43</b>		
Padlockable L Handle		<b>E-LHANDLE</b>
Padlockable Swing Handle		<b>E-SWHANDLE</b>
Three point locking rods	600mm	<b>E-TPL06</b>
	800mm	<b>E-TPL08</b>
	1000mm	<b>E-TPL10</b>
	1200mm	<b>E-TPL12</b>

<b>E65</b>		
Padlockable L Handle	600mm	<b>E65-LTPL06</b>
including three point locking rods	800mm	<b>E65-LTPL08</b>
	1000mm	<b>E65-LTPL10</b>
	1200mm	<b>E65-LTPL12</b>
Padlockable Swing Handle	600mm	<b>E65-SWTPL06</b>
including three point locking rods	800mm	<b>E65-SWTPL08</b>
	1000mm	<b>E65-SWTPL10</b>
	1200mm	<b>E65-SWTPL12</b>

<b>E66</b>		
Padlockable L Handle	600mm	<b>E66-LTPL06</b>
including three point locking rods	800mm	<b>E66-LTPL08</b>
	1000mm	<b>E66-LTPL10</b>
	1200mm	<b>E66-LTPL12</b>
Padlockable Swing Handle	600mm	<b>E66-SWTPL06</b>
including three point locking rods	800mm	<b>E66-SWTPL08</b>
	1000mm	<b>E66-SWTPL10</b>
	1200mm	<b>E66-SWTPL12</b>

### FLUSH MOUNT SURROUND

Description	Height	Grey Part No.	Orange Part No.
<b>E43</b>			
	400mm	<b>E-FS04G</b>	<b>E-FS04A</b>
	600mm	<b>E-FS06G</b>	<b>E-FS06A</b>
	800mm	<b>E-FS08G</b>	<b>E-FS08A</b>
	1000mm	<b>E-FS10G</b>	<b>E-FS10A</b>
	1200mm	<b>E-FS12G</b>	<b>E-FS12A</b>

### RAIN HOOD

Description	Part No.
E43 & E65 Grey	<b>ELS52070</b>
E43 & E65 Orange	<b>ELS52070A</b>
E66	<b>ELS62369</b>



ELS62369

### PLINTH

Description	Width	Part No.
100mm high painted 2mm Mild Steel	600mm	<b>E-PLINTH2D</b>
100mm high Hot Dip Galvanised	600mm	<b>E-GALPLINTH1</b>
	1200mm	<b>E-GALPLINTH2</b>
	1800mm	<b>E-GALPLINTH3</b>
	2400mm	<b>E-GALPLINTH4</b>

## CUSTOM SOLUTIONS

The EVOLUTION Board design is flexible and adaptable to meet most design variations by skilled switchboard assemblers. Contact IPD for more information.



**Ganged DBs**



**400A MCCB  
Mainswitch option  
13kA Backup with 6kA MCB**



**Fully rated copper  
interconnection options**



**Split chassis and  
Load shedding options**



**Home Automation Enclosures**



**250A IPD Mainswitch or GE DIN  
Isolator Mainswitch option**