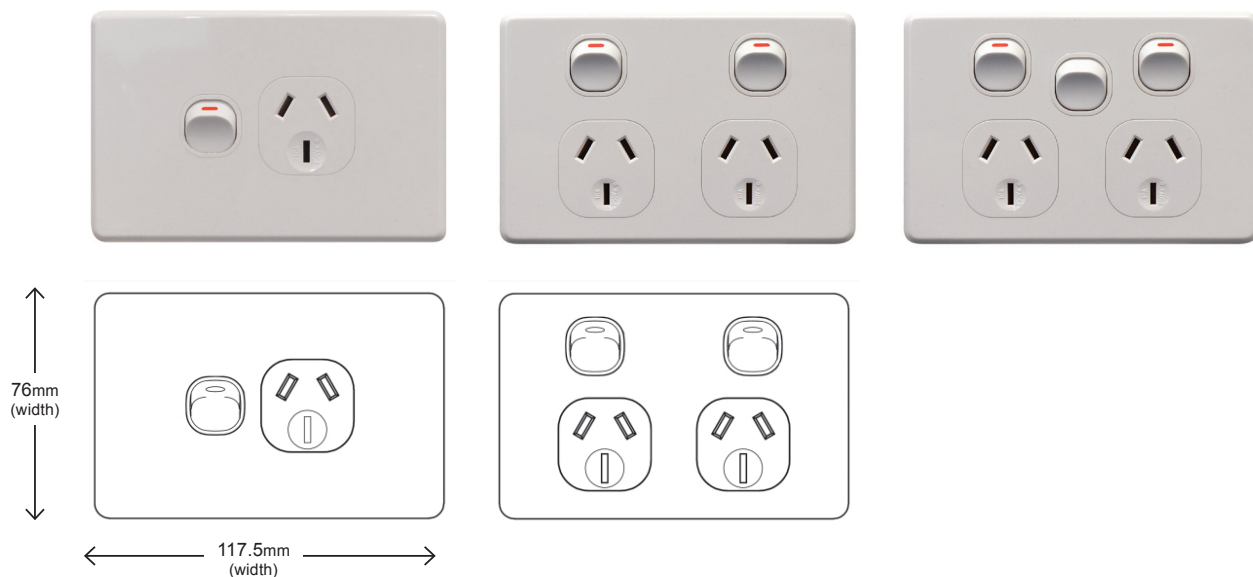


Thriftee Power Points

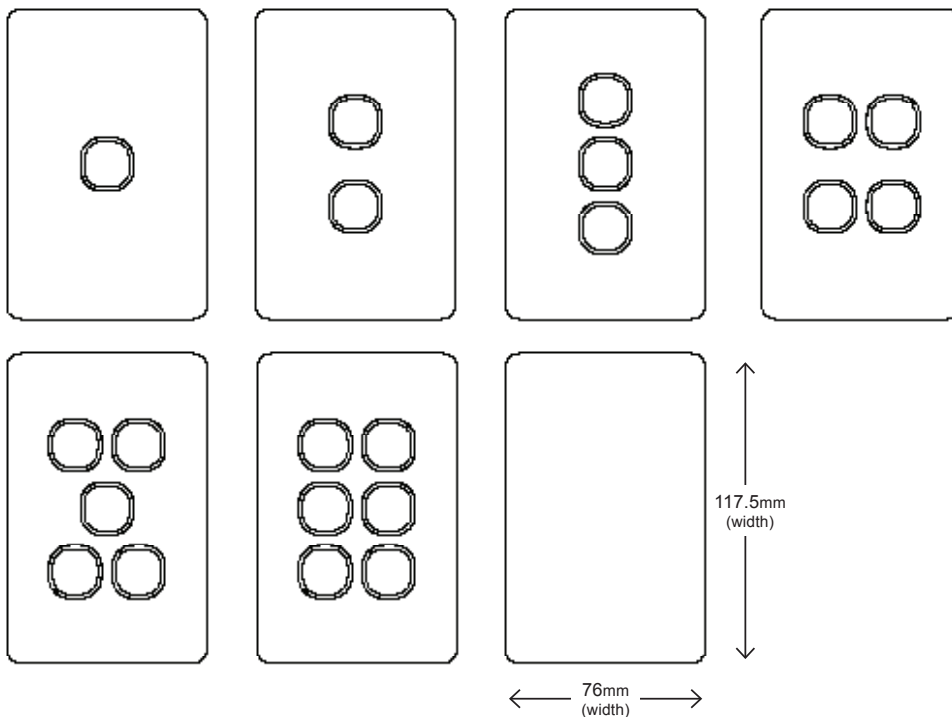
- Socket outlets approved to AS/NZS3112.
- Switches approved to AS/NZS3133.
- Uses brass tunnel terminals that have the screws backed out for easier installation of cabling. Power point terminals have 5.5mm bore.
- Fits standard Australian wall boxes and mounting accessories that use 84mm mounting centres.
- #2 Phillips head combo screws for the terminals.
- Covers, plates and dollies are made from polycarbonate.
- White only.
- Plate is 13mm deep.
- One (1) Year Warranty.
- Example of size seen below:



Product Code	Description
SGPO	GPO 1G 10A 250V~
SGPO15	GPO 1G 15A 250V~
DGPO	GPO 2G 10A 250V~
DGPO15	GPO 2G 15A 250V~
DGPOSW	GPO 2G 10A 250V~ With 10AX Switch Mech

Thriftee Switches

- Switches are rated 10AX 250V~ and approved to AS/NZS3133.
- Fits standard Australian wall boxes and mounting accessories that use 84mm mounting centres.
- Switches are two way with looping terminal and suit 4 x 1.5mm² cabling with 4.1mm bore terminals.
- #1 Phillips head combo screws for the terminals.
- Covers, plates and dollies are made from polycarbonate.
- White only.
- Plate is 13mm deep.
- One (1) Year Warranty.
- Example of size seen below:



Product Code	Description	Product Code	Description
SWV1G	Switch Vertical 1G, 10AX 250V~	SWPXG	Blank Plate & Cover
SWV2G	Switch Vertical 2G, 10AX 250V~	SWP1G	Switch Plate Vertical 1G (Empty Plate)
SWV3G	Switch Vertical 3G, 10AX 250V~	SWP2G	Switch Plate Vertical 2G (Empty Plate)
SWV4G	Switch Vertical 4G, 10AX 250V~	SWP3G	Switch Plate Vertical 3G (Empty Plate)
SWV5G	Switch Vertical 5G, 10AX 250V~	SWP4G	Switch Plate Vertical 4G (Empty Plate)
SWV6G	Switch Vertical 6G, 10AX 250V~	SWP5G	Switch Plate Vertical 5G (Empty Plate)
SWH1G	Switch Horizontal 1G, 10AX 250V~	SWP6G	Switch Plate Vertical 6G (Empty Plate)
SWH2G	Switch Horizontal 2G, 10AX 250V~		
SWH3G	Switch Horizontal 3G, 10AX 250V~		
SWH4G	Switch Horizontal 4G, 10AX 250V~		
SWH5G	Switch Horizontal 5G, 10AX 250V~		
SWH6G	Switch Horizontal 6G, 10AX 250V~		

Thriftee Switch Mechs

- SWM is approved to AS/NZS3133
- Fits many brands of switch plates.
- Uses brass tunnel terminal that have the screws backed out for easier installation of cabling.
- Switches are single pole two way with looping terminal and suit 4 x 1.5mm² cables with 4.1mm bore.
- Slotted head terminal screws, and backed out for easy installation.
- One (1) Year Warranty.
- Examples shown below:



SWM



SWM20



SWM32



SWMDP

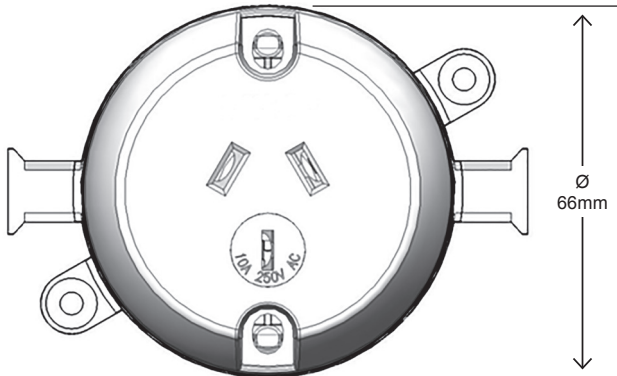


SWMI

Product Code	Description
SWM	Switch Mech 10AX 250V~
SWM20	Switch Mech 16AX/20A 250V~
SWM32	Switch Mech 32A 250V~
SWMDP	Switch Mech Double Pole 10AX 250V~
SWMI	Switch Mech Intermediate 10AX 250V~

Thriftee Surface Socket

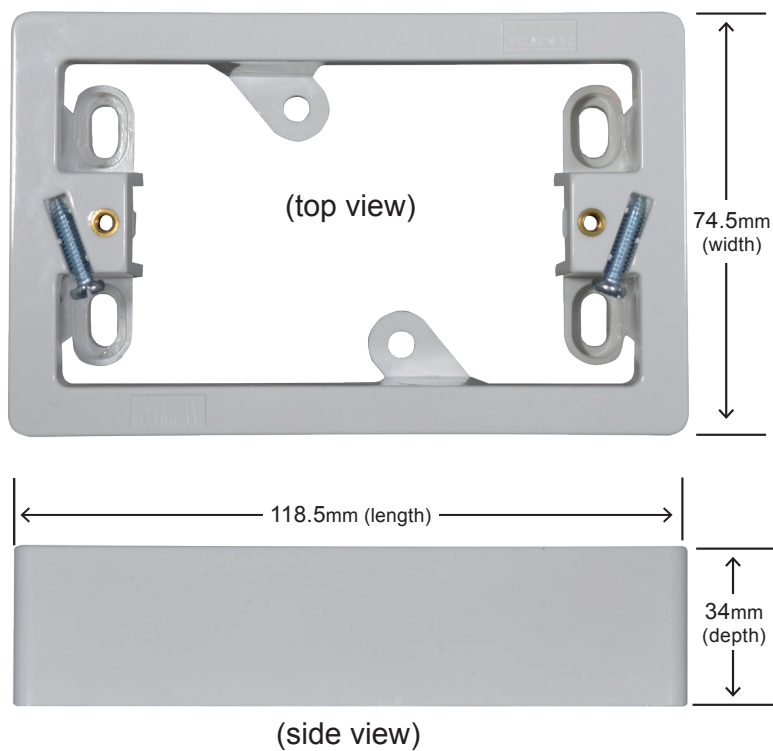
- Suitable for 90mm downlight holes
- Diameter 66mm
- Depth 55mm (including backing plate)
- 10A 250V~ Three pins
- Combination head screws
- Clean Precision break out for TPS cabling
- Backing plate has raised edges with clean breakouts and apertures for TPS cabling
- Nail plate entry/exit points
- Multiple fixing points including external tabs for cable ties, clouts and screws
- Cover 'push clips' onto backing plate
- Surface Socket approved in accordance with AS/NZS3112.
- Colour is white.
- One (1) Year Warranty.
- Example of size seen below:



Product Code	Description
PB10	Plug Base 10A 250V~ Three Pins (10 PACK)
PB50	Plug Base 10A 250V~ Three Pins (50 PACK)

Thriftee Mounting Flange

- 34mm medium mounting flange with 84mm spaced brass metal threaded inserts.
- 12 break out positions for cable or conduit (3 per side and 3 per end)
- Internal opening accommodates products that are 76 x 56mm, product is ideal for mounting switch plates and sockets
- 6 mounting hole position for fixing to walls and panels
- Made from tough polycarbonate
- Colour : White



Product Code	Description
MF34	Mounting Flange 34mm

Thriftee Junction Box

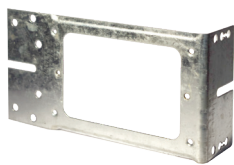
- Junction box with 4 loose terminals.
- Cover has double start plastic threads for easy quick assembly to the base.
- Clean easy to break out entries for cable access.
- Baseplate has captive nails in position ready for use.
- Strong robust polycarbonate construction.
- Supplied with single screw connectors.
- Complies with AS/NZS3000: 2018. Clause 1.20.4.2 for Earthing Connectors.
- 68mm (w) x 99.5mm (h) x 47.5mm (d)
- Terminals Ø6.0 tunnel, suits 3 x 6.0mm²
- 40A rated
- Includes: 1 x 2-screw connector and 3 x 1-screw connectors



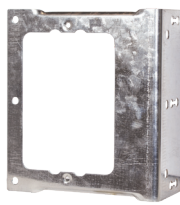
Product Code	Description
JB4	Junction Box with 4 Terminals

Thriftee Mounting Brackets

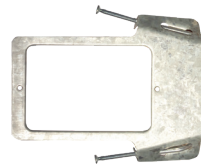
- Thriftee mounting brackets are available for many different construction applications
- 84mm mounting centres with 6/32 UNC standard mounting threads to suit Australian accessories
- Aperture sizes designed to suit the majority of Australian accessories in the market
- Made from strong durable electro-galvanised zinc steel
- Models available for timber construction, steel frames and brick/masonry applications



BH



BV



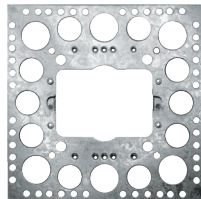
BNPH



BNPV



BVH



BPVH

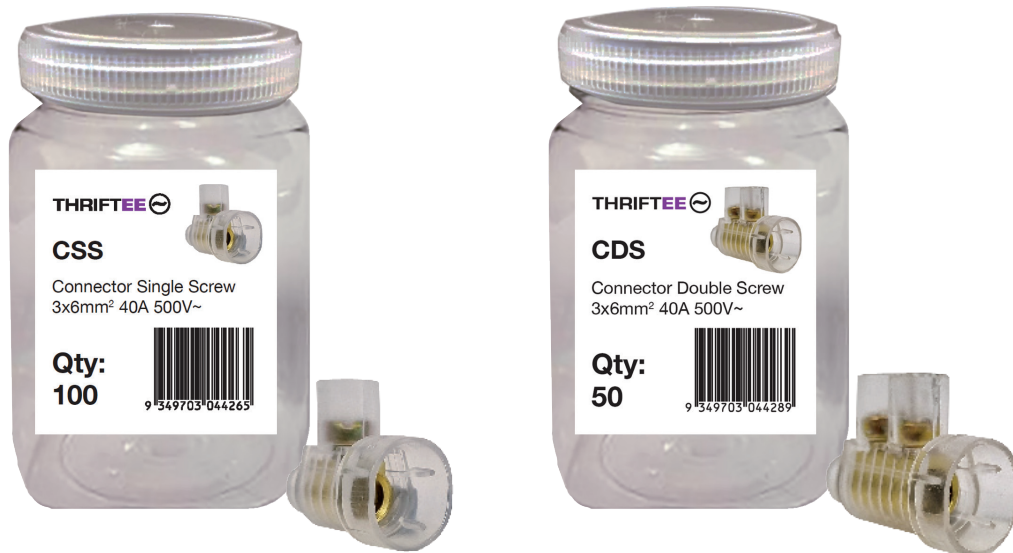


MC10

Product Code	Description
BH	Bracket Horizontal
BV	Bracket Vertical
BNPH	Bracket Nail Plate Horizontal
BNPV	Bracket Nail Plate Vertical
BVH	Bracket Vertical Horizontal
BPVH	Bracket Plaster Vertical Horizontal
MC10	Mounting Clip Suit 10mm Wall Panel

Thriftee Connector Screws

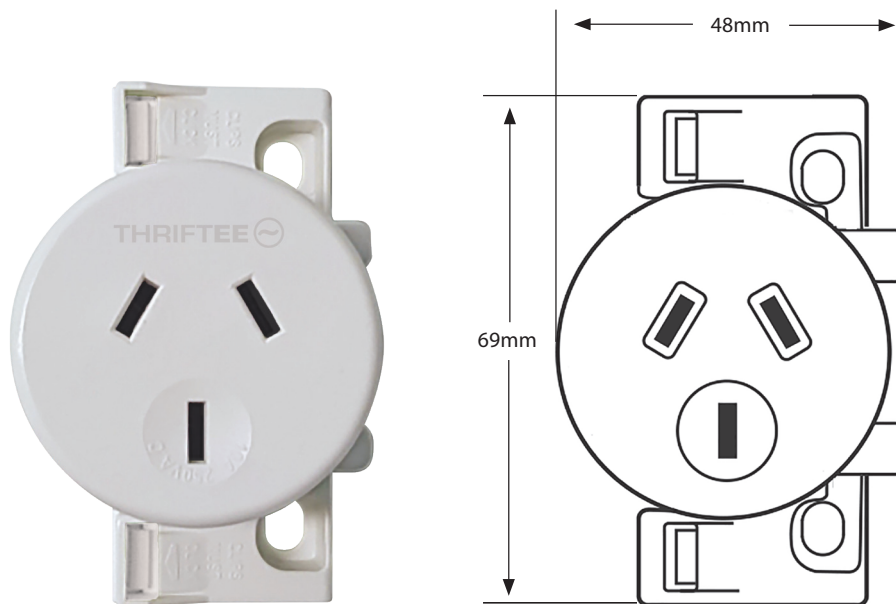
- Connecting devices for low voltage circuits for household and similar purposes.
- Suitable for 3 x 6mm² cables
- 40A 500V~
- Flexible insulation shroud
- Brass terminal tunnel diameter 6mm
- Screw #2 Philips drive with 5mm thread



Product Code	Description
CSS	Connector Single Screw 3x6mm ² 40A 500V Sold as Jar of 100
CDS	Connector Double Screw 3x6mm ² 40A 500V Sold as Jar of 50

Thriftee Plug Base, “QC” Fast Connecting

- Suitable for 90mm downlight holes.
- Depth 46mm.
- 250V~ 10A Three pins.
- Multiple fixing points including external tabs for cable ties, clouts and screws.
- Cover ‘push clips’ onto backing plate.
- Suitable for 1.0mm² to 2.5mm² TPS.
- Suitable for end or mid cable mounting.
- Colour is white.
- One (1) Year Warranty.
- Example of size seen below:



Product Code	Description
PBQC	Plug Base QC, 250V~ 10A 3 Pins