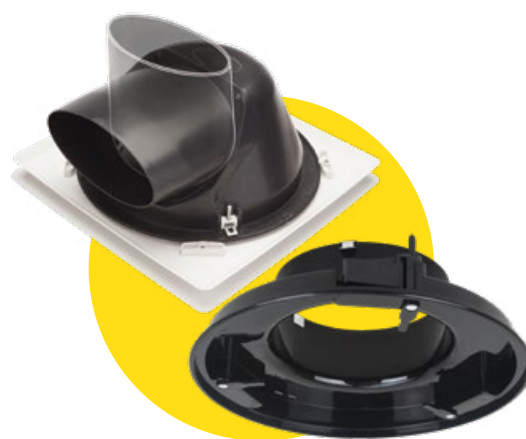




RESPG150RNBK



RESPG150SQBK

RESPG8-RNWH
RESPG150RNWHRESPG8-SQWH
RESPG150SQWH

See page 67 for grille to duct connector
& ceiling grille with clip-in spigot.

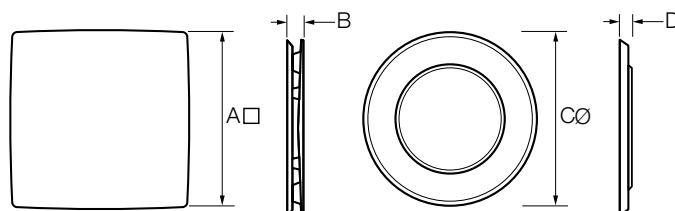
RAPID RESPONSE

GRILLES



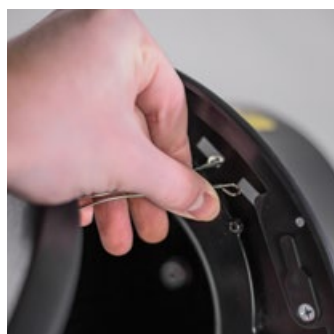
The stylish Rapid Response Grilles have a contemporary design and are available in a white or black finish.

- Available in Round and Square models.
- Available in 2 sizes to suit 8" and 10" Rapid Response header box fan models.
- Stylish, contemporary design.
- Quick & easy to install.
- Can be retrofitted to a previously installed Rapid Response Fan.



MODEL NO.	GRILLE	A	B	C	D
RESPG8-SQWH	8" Square Grille White Finish	300	28	-	-
RESPG8-RNWH	8" Round Grille White Finish	-	-	294	19
RESPG150SQWH	10" Square Grille White Finish	353	30	-	-
RESPG150RNWH	10" Round Grille White Finish	-	-	332	24
RESPG150SQBK	10" Square Grille Black Finish	353	30	-	-
RESPG150RNBK	10" Round Grille Black Finish	-	-	332	24

All dimensions in mm



Round Grille Installation

Pinch the ends of the metal spring clips together.

Feed the clips through the small slots on either side of the fan body.



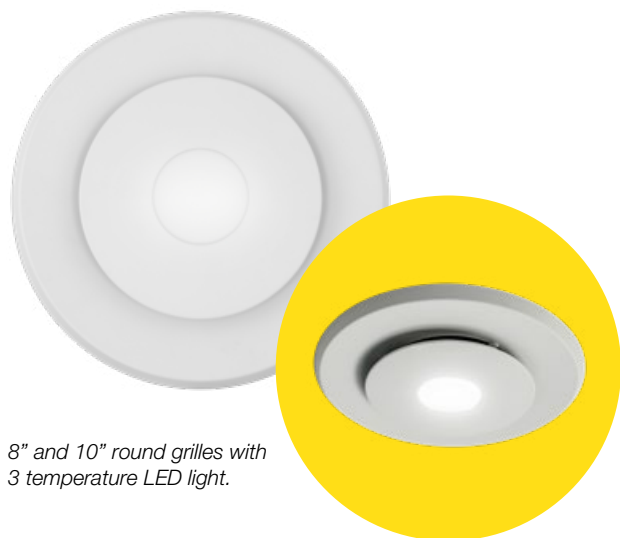
Square Grille Installation

Push the grille onto the base of the fan until the clips click into place.

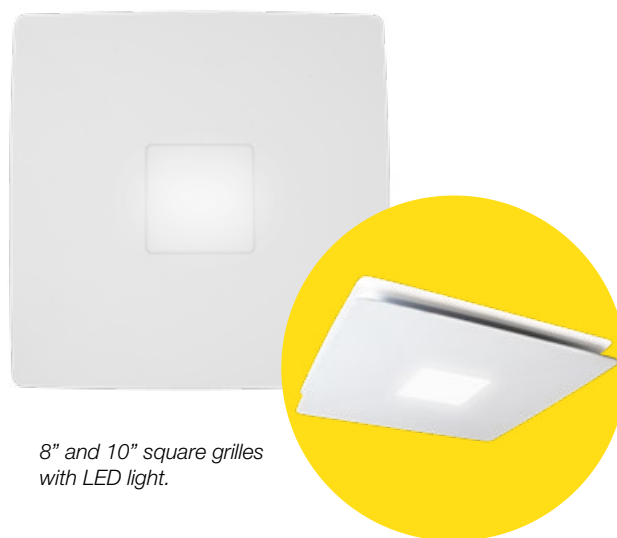
Rotate the grille to the desired position.



Scan the code or take a look on our website to watch the fan in action



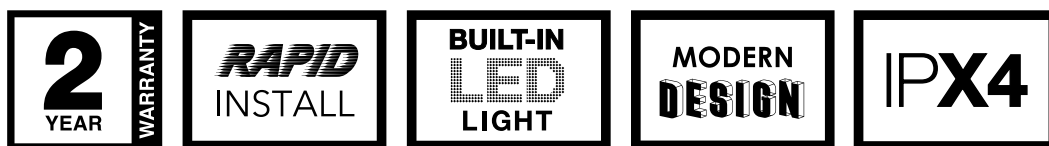
8" and 10" round grilles with 3 temperature LED light.



8" and 10" square grilles with LED light.

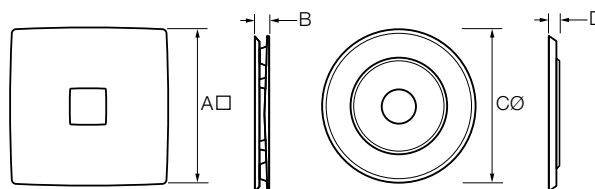
RAPID RESPONSE

GRILLES WITH LED



The stylish and modern Rapid Response Grille with LED light will brighten up any bathroom, ensuite or toilet. LED light in round grilles can be set to cool, neutral or warm white by changing the Tri-Switch's position. The Rapid Response grilles are quick to install and can be easily removed for cleaning.

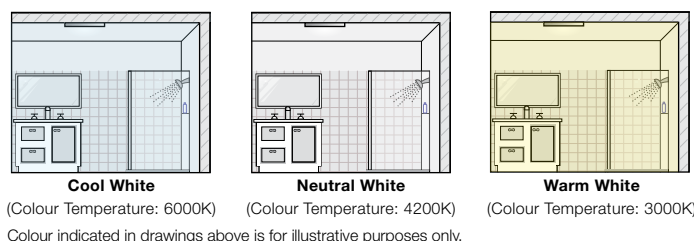
- Available in Round and Square models.
- Available in 2 sizes to suit 8" and 10" Rapid Response header box fan models.
- Stylish, contemporary design.
- LED light & Rapid Response Fan can be controlled separately.
- Quick & easy to install.
- Can be retrofitted to a previously installed Rapid Response Fan.
- LED light in round grilles can be set to cool, neutral or warm white to match other installed lights.
- Complies to: AS/NZS 60598.2.2:2001 and AS/NZS 60598.1:2013 Certificate No.: SAA152082.



MODEL NO.	GRILLE	A	B	C	D
RESPG8-SQWH-LED	8" Square Grille White Finish with LED	300	28	-	-
RESPG8-RNWH-TRILED	8" Round Grille White Finish with Tri-Switch LED	-	-	294	19
RESPG150SQWH-LED	10" Square Grille White Finish with LED	353	30	-	-
RESPG150RNWH-TRILED	10" Round Grille White Finish with Tri-Switch LED	-	-	332	24

All dimensions in mm

MODEL NO.	GRILLE	LUMENS (LM)	INPUT POWER (W)	COLOUR TEMP (K)	BEAM ANGLE (°C)
RESPG8-SQWH-LED	Square	1000	12	4200	180
RESPG8-RNWH-TRILED	Round	800	9	3000/4200/6000	180
RESPG150SQWH-LED	Square	1000	12	4200	180
RESPG150RNWH-TRILED	Round	800	9	3000/4200/6000	180



TRI-SWITCH LED (ROUND GRILLES ONLY)

Round grilles come factory pre set to neutral white (4200K), but can be changed to warm white (3000K) or cool white (6000K) by changing the position of Tri-Switch located on back of grille.

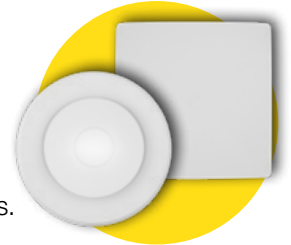


RAPID RESPONSE

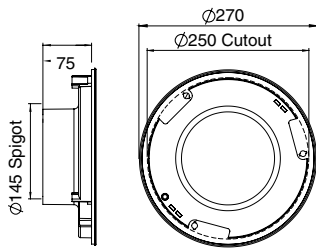
GRILLE TO DUCT CONNECTOR

The easy to install Rapid Response grille to duct connector is designed to fit one of our stylish and modern 8" Rapid Response Grilles. The grille to duct connector is suited for ducted systems using an in-line, roof, or external wall mounted fan. These grilles are quick to remove, making them easy to clean.

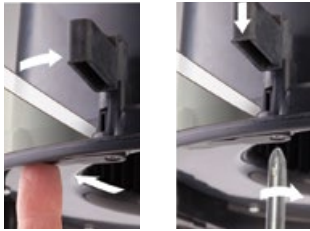
- High strength swing clips make installation easy.
- Can be retrofitted into a standard 8" (250mm) round cut out.
- Designed to fit our range of 8" Rapid Response Grilles.
- Suitable for 150mm ducting.



See page 32-33 for Rapid Response grille options.



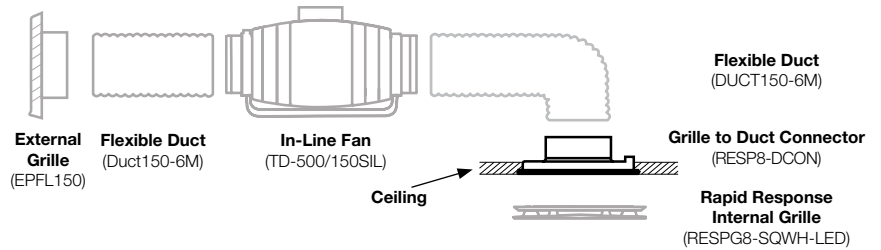
All dimensions in mm



Rotate swing clips to hold grille to duct connector in place.

Tighten screws so clips clamp onto ceiling board.

TYPICAL IN-LINE INSTALLATION



RAPID RESPONSE

CEILING GRILLE WITH CLIP-IN SPIGOT

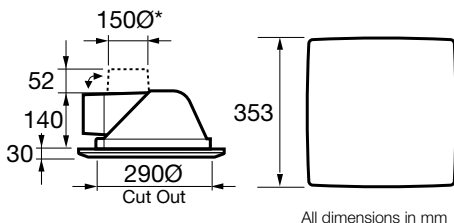
The modern looking Response Ceiling Grille has been designed for ducted systems using an in-line fan and external grille. It features a clip-in spigot that can be positioned for horizontal or vertical duct connection.

- Can be retrofitted into a standard 10" round fan cut out.
- Unique 'push-out' ceiling clamps make installation easy.
- Clip-in spigot makes installation and duct connection easier.
- Grille can be easily rotated to align with the walls and removed for cleaning.

Model No. RCG150SQWH



* Oval spigot designed to fit 150mm duct.
Spigot can be mounted horizontally or vertically.



All dimensions in mm