

Brass* Floor Box

At a glance...

- Capacity: 1 standard sized G.P.O.
1 No. 3 Gang Data Plate
- Box Size: 135 x 130 x 100mm Deep
- Lid Material: Brass*
- Suitable for: Compact Installations

“Easy as ECD”



- Compact and stylish, the FB147 Series of Flush Floor Boxes provide ready access to power and communication outlets recessed in the floor.
- Suitable for use in: Modern open plan living areas, home theatres, showrooms, shop-front displays, boardroom tables, schools, universities, and public buildings.
- Available in Brass*, the hard wearing 145 x 145mm cover bevels down to a fine edge under foot and is suitable for use with polished floor boards, carpet, ceramic tiles and vinyl floor coverings. (Not suitable for use in wet areas)
- Capacity 1 x Double GPO and 3 x Data.
- Two small flaps allow cords out of the box when in use and close flat when not in use.
- A versatile, practical and decorative solution to your open plan cabling needs.
- This product has been examined in accordance with AS 3000 and conforms to A.C.M.A requirements.

*Brass Look – made of composite materials predominantly Cuprum.



ECD

ESTABLISHED 1979

Electric Cable Duct Systems P/L

Phone: 1300 123 ECD (323)

Email: info@ecd.net.au

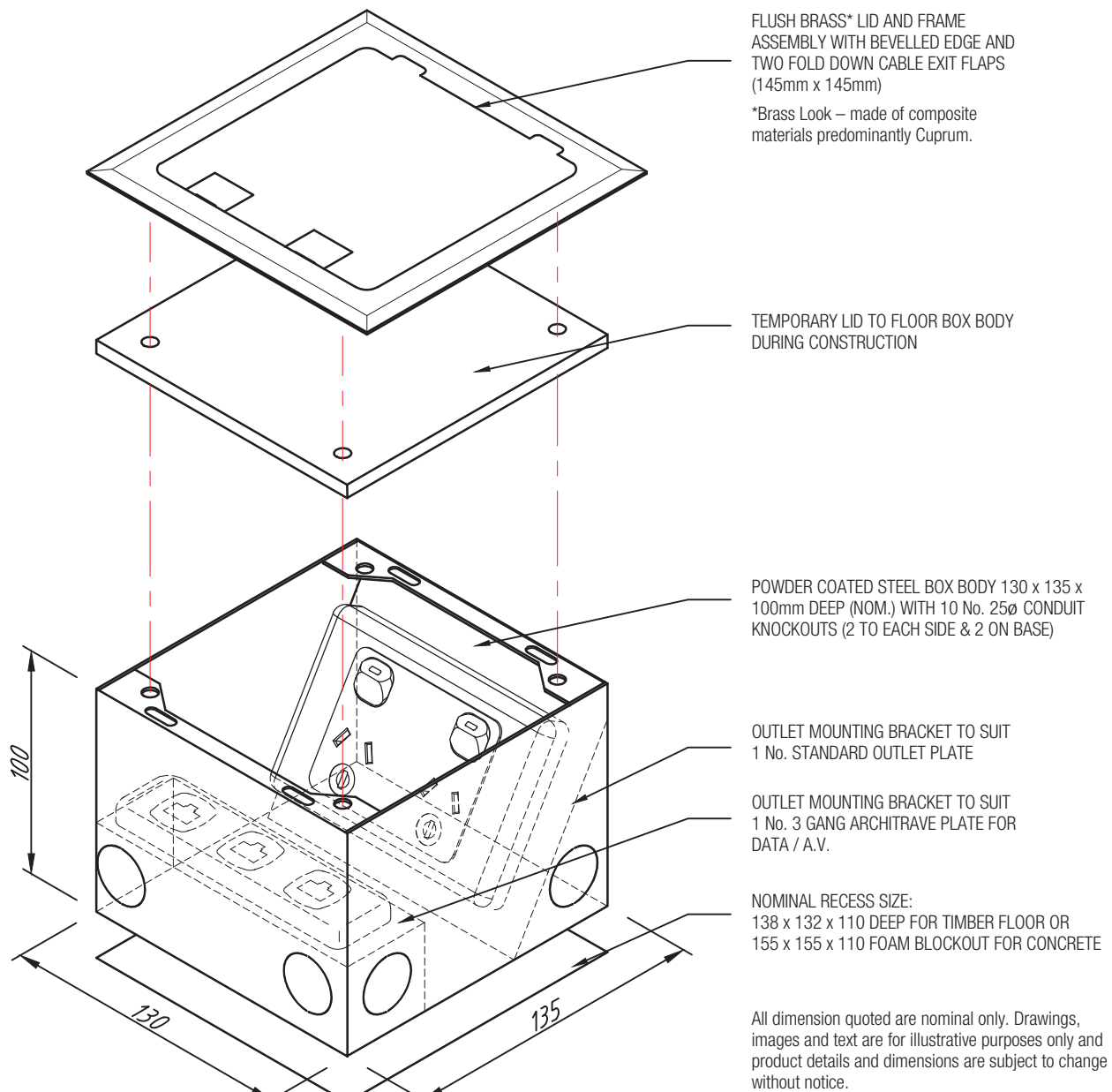
Fax: 1300 372 825

website: www.ecd.net.au

ABN 80005544105

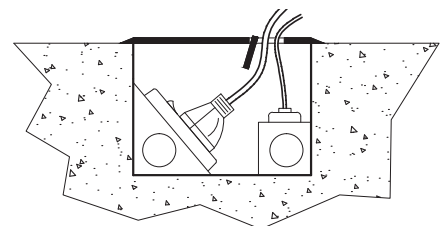
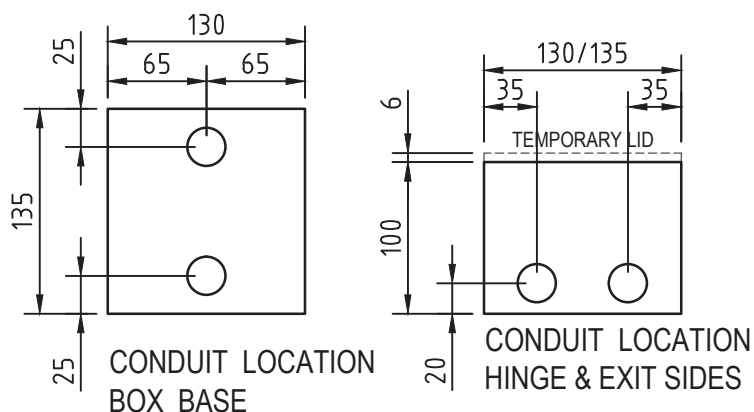
ASSEMBLY DIAGRAM

BRASS* FLOOR BOX – FB147



All dimension quoted are nominal only. Drawings, images and text are for illustrative purposes only and product details and dimensions are subject to change without notice.

This product is not suitable for use in wet areas, is intended for use with fixed wiring only and must be installed by a licensed Electrical Mechanic in accordance with AS 3000, SAA Wiring Rules and A.C.M.A. requirements.



ASSEMBLED SIDE VIEW OF FB147
SINGLE COMPARTMENT FLOOR BOX
SHOWING CORD OUTLET FLAP IN USE