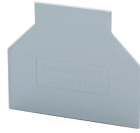


PP6/10U



**connectwell**  
THE RIGHT CONNECTION

### Partition Plate

Partition Plate are used to segregate different groups of Terminal Blocks and provide the required creepage and clearance values in an assembly. Partition Plates electrically isolate adjacent shorting links. They also provide a separation between Terminal Blocks of different potentials.

#### PRODUCT SPECIFICATION

Height	37.5 mm
Length	56.5 mm
Width (Thickness)	1.5 mm

#### ORDERING INFORMATION

CAT. NO.	DESCRIPTION	STD. PACK
PP6/10U	Partition Plate in Grey colour suitable for CTS6U / CTS10U Terminal Block	50

#### SUITABLE FOR

CTS10U	10 sq. mm Standard Feed Through Terminal Blocks
CTS6U	6 sq.mm Standard Feed Through Terminal Blocks