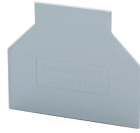


PP35UN



connectwell
THE RIGHT CONNECTION

Partition Plate

Partition Plate are used to segregate different groups of Terminal Blocks and provide the required creepage and clearance values in an assembly. Partition Plates electrically isolate adjacent shorting links. They also provide a separation between Terminal Blocks of different potentials.

PRODUCT SPECIFICATION

Height	50 mm
Length	64.5 mm
Width (Thickness)	1 mm

ORDERING INFORMATION

CAT. NO.	DESCRIPTION	STD. PACK
PP35UN	Partition Plate in Grey colour suitable for CTS35UN Terminal Block	50