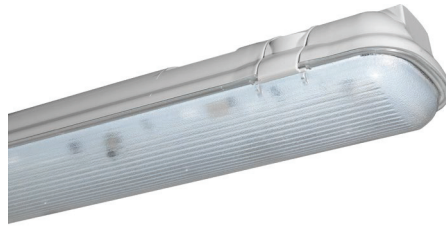


CLEVERTRONICS 24V TEMPORARY EMERGENCY WEATHERPROOF BATTEN



PRODUCT INFORMATION

Part Number	TWB4LED24VS-FPBE
Description	Temporary 24V 4ft Emergency weatherproof batten with a short length flex and plug from both ends for temporary lighting applications on construction sites (supports end-to-end cabling)
Construction	ABS Base and PC Diffuser
Mounting	Chain Suspension or Surface mount (brackets supplied for surface mounting – no need to open luminaire)
Dimensions L x W x H	1268mm x 85mm x 62mm
Weight	1.7kg
Operating Mode	Sustained
Testing System	N/A - Manual test switch
Battery	Lithium Iron Phosphate, 3.2V 3000mAh
Charging Method	Intelligent current limited constant voltage
Diffuser	Polycarbonate
Driver / Ballast	2 x Stallion 24V constant current driver
Lamp(s)	LED strip module, 4,000K natural white, 50,000 hours
Operating Voltage	18-28V DC
Total lumen output	3800 lm @ 113lm/W
Power Consumption	33 Watts
IP Rating	IP65
IK Rating	IK08 (Diffuser), IK06 (Base)
Operating Temperature	0°C to 40°C
AS2293 Classification	C ₀ =D80 C ₉₀ =D50

REPLACEMENT PARTS

PART NUMBER	DESCRIPTION
1560150	BATT:LiFePO4 3.2V 3.0Ah 70mm lead,noBRKT

The product details described in this document are current as at the version date of the document. We reserve the right to change product design, specifications or materials (Specifications) as part of our continuous improvement program. Please confirm the applicable Specifications at the time of placing your order

TEMP LITHIUM IRON
PHOSPHATE
TEMPORARY