

Large Conductor Pins, Forks & Rings

Pin Connectors Insulated 10mm² to 35mm²

Pin Connectors for larger conductors than conventional yellow range of terminals. Insulation is black nylon and funnel entry is provided for ease of wire insertion. Terminals accommodate fine-stranded wire.

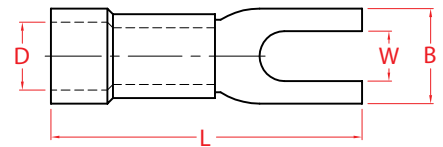
Catalogue No.	Nominal Conductor (mm ²)	Dimensions (mm)				Crimp Tool	Pack Qty
		L	B	P	D		
PC10	10	35	4.2	14.5	8.0	K25 / HNN4	10
PC16	16	41	5.5	18.0	9.2		10
PC25	25	45	6.8	20.3	11.1	K28	10
PC35	35	55	8.0	24.5	13.6	K9	5



Forked Spade Insulated 10mm² and 16mm²

Forked Spades for larger conductors than conventional yellow range of terminals. Insulation is black nylon and funnel entry is provided for ease of wire insertion. Terminals accommodate fine-stranded wire. These forked spades are narrow so that they can be used on modern compact switchgear.

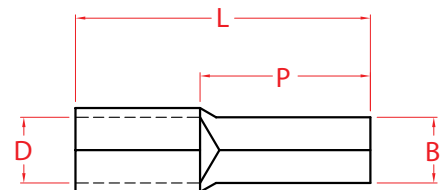
Catalogue No.	Nominal Conductor (mm ²)	Stud Size	Dimensions (mm)				Crimp Tool	Pack Qty
			L	B	W	D		
FS10-4	10	4	26	9.8	4.2	8.2	HNN4 / K25	10
FS10-5	10	5	35.2	11.5	5.2	8.2		10
FS16-4	16	4	31	9.8	4.2	9.0		10
FS16-5	16	5	31	11.5	5.2	9.0		10



Pin Connectors Uninsulated 10mm² to 50mm²

CABAC's Un-Insulated PCU range are larger size pins than the normal terminal style. They are useful to connect narrow tunnels in switchgear.

Catalogue No.	Nominal Conductor (mm ²)	Dimensions (mm)				Crimp Tool	Pack Qty
		L	B	P	D		
PCU10	10	23.5	4.3	14.5	4.8	K25 / K26	50
PCU16	16	28.0	5.5	18.0	5.9	K25 / K26	50
PCU25	25	32.0	7.0	20.3	7.0	K28 / K9	50
PCU35	35	39.0	8.0	24.5	8.9	K9	50
PCU50	50	45.0	9.5	26.0	10.0	K9	1



Large Diameter Rings on a Small Conductor

These Ring Terminals are designed to attach a small wire to a large diameter bolt, such as earth connections etc.

Catalogue No.	Nominal Conductor (mm ²)	Stud (mm)	Crimp Tool	Pack Qty	A	B	D	E
RTU10-12	10	12	K26, K27, K28	100	34.00	11.00	6.50	8.50
RTU10-16	10	16		100	50.00	16.00	8.50	8.50
RTU16-16	16	16	K28, K9	50	54.00	16.00	8.50	16.50
RTU20-12	20	12		50	54.00	16.00	13.00	16.50

