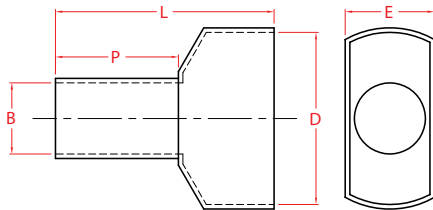


# Twin & Un-insulated Bootlace Pins

## Twin Wire BLPT Bootlace Pins

The twin wire BLPT range is specifically designed to terminate two wires in the same terminal. With the development of smaller switches and devices become smaller. The twin wire BLPT solves these problems in a quick and easy way.



Catalogue No.	Nominal Conductor (mm <sup>2</sup> )	L	P	B	D	E	Colour	Pack	Tooling			
BLPT075	2 x 0.75	15.0	8.0	1.8	5.0	2.8	Grey	100				
BLPT100	2 x 1.0	15.0	8.0	2.05	5.4	3.4	Red	100				
BLPT150	2 x 1.5	16.0	8.0	2.3	6.6	3.6	Black	100	HNKE3	HNKE5	HNKE6	HNKE9
BLPT250	2 x 2.5	18.5	10.0	2.8	7.8	4.2	Blue	100				
BLPT400	2 x 4.0	23.0	12.0	3.7	8.8	4.9	Grey	50				
BLPT600	2 x 6.0	26.0	14.0	4.8	10.0	6.9	Yellow	25				

## Un-insulated Bootlace Pins - Cord End Connectors

CABAC un-insulated bootlace pins are used to terminate conductors, by containing the strands in a thin walled copper sleeve. Crimping of the sleeves is optional, since the screw in the terminal will "crimp" the connection.

Catalogue No.	Nominal Conductor (mm <sup>2</sup> )	Dimensions (mm)	Std Pack	Tooling			
		L	B				
BLPU050	0.50	8	1.0	100			
BLPU075	0.75	8	1.2	100			
BLPU100	1.0	10	1.4	100	HNKE3	HNKE6	
BLPU150	1.5	10	1.7	100			
BLPU250	2.5	10	2.2	100		HNKE5	
BLPU400	4	12	2.8	100		HNKE9, 10 & 11	
BLPU600	6	12	3.5	100			
BLPU1000	10	12	4.5	25			
BLPU1600	16	12	5.8	25			
BLPU2500	25	18	7.3	10			HNKE7
BLPU3500	35	18	8.3	10			
BLPU5000	50	20	10.3	10			HNKE8
BLPU7000	70	25	13.5	5			
BLPU9500	95	32	14.7	3			
BLPU12000	120	32	16.7	3			

