

TK Series Tracks & Fittings

TK TRACKS

- 230V-240V power supply
- Tracks include 1 x TK-END and 1 x end cap



Spotlight Track Black
TK-2000-BL (2 metres)
TK-1000-BL (1 metre)

Spotlight Track Silver
TK-2000-SI (2 metres)
TK-1000-SI (1 metre)

Spotlight Track White
TK2000-WH (2 metres)
TK1000-WH (1 metre)

Fitting the Lamp Heads

- Maximum capacity of track is 7 AMPS in one run of connected track
- For number of heads per run see chart (right)
- TK heads are double insulated

	Style	Amps	No. of Heads
LED	9Watt	0.06	60
LED	15Watt	0.07	50
12volt	50Watt	0.22	30
GU10	50Watt	0.22	30
R80	100Watt	0.42	16
PAR30	100Watt	0.42	16
PAR38	150Watt	0.64	10

TK TRACK ACCESSORIES



TK-CROSS-WH



TK-CROSS-BL



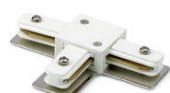
TK-CORNER-WH



TK-CORNER-SI



TK-CORNER-BL



TK-TEE-WH



TK-TEE-SI



TK-TEE-BL



TK-JOIN-WH



TK-JOIN-SI



TK-JOIN-BL



TK-END-WH



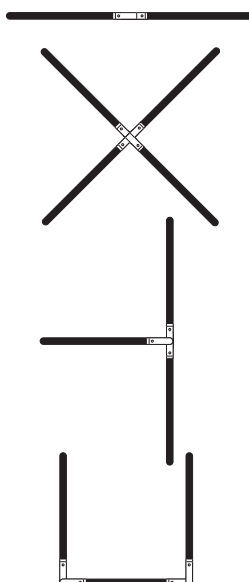
TK-END-SI



TK-END-BL

Use to join multiple track sections using flexible cable

Examples of track joiner arrangements



TK-ROD-SC Satin Chrome

- Mounts track 300mm or 630mm away from ceiling
- TK-ROD comes with satin chrome, White & Black track caps



DF-WIRE

- 1x 2 metre Wire with 1x ceiling mount 1x Glider and 2x M10 nuts
- Adjustable length from zero to 2 metres.
- Attractive chrome 2 piece ceiling mounts. Can be screwed from below or bolted from above ceiling.

