

ALU

LED STRIP HOUSING



ALU profiles

Universal - 2m

ML-ALU2-K-V3

Universal aluminium profile in 2m lengths with opaque or clear diffuser

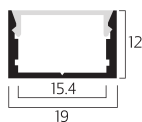
Size: L: 2,000mm | W: 19mm | H: 12mm

Warranty: 3 years

Min order qty: 2

Kit includes:

1 x 2m universal aluminium housing, 1 x 2m opaque diffuser, 2 x end caps



Universal - 4m

ML-ALU4-K-V3

Universal aluminium profile in 4m lengths with opaque or clear diffuser

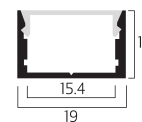
Size: L: 4,000mm | W: 19mm | H: 12mm

Warranty: 3 years

Min order qty: 2

Kit includes:

1 x 4m universal aluminium housing, 1 x 2m opaque diffuser, 2 x end caps



Corner

ML-ALUCR-K-V3

Corner aluminium profile in 2m lengths with opaque diffuser

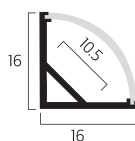
Size: L: 2,000mm | W: 16mm | H: 16mm

Warranty: 3 years

Min order qty: 2

Kit includes:

1 x 2m corner aluminium housing
1 x 2m opaque diffuser
2 x end caps
3 x mounting brackets



Recessed

ML-ALUR-K-V3

Recessed aluminium profile in 2m lengths with opaque diffuser

Size: L: 2,000mm | W: 25mm | H: 7mm

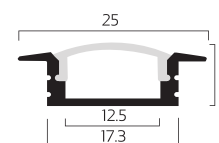
Cut-out width: 17.3mm

Warranty: 3 years

Min order qty: 2

Kit includes:

1 x 2m recessed aluminium housing
1 x 2m opaque diffuser
2 x end caps
4 x mounting brackets



Slim

ML-ALUSLM-K-V3

Slim aluminium profile in 2m lengths with opaque diffuser

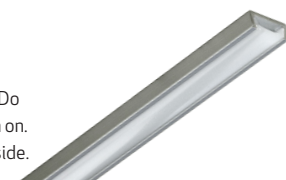
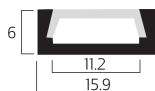
Size: L: 2,000mm | W: 15.9mm | H: 6mm

Warranty: 3 years

Min order qty: 2

Kit includes:

1 x 2m slim aluminium housing
1 x 2m opaque diffuser
2 x end caps
3 x mounting brackets



Suspended

ML-ALUSUS-K-V3

Suspended aluminium profile in 4m lengths with opaque diffuser

Size: L: 4,000mm | W: 35mm | H: 35mm

Warranty: 3 years

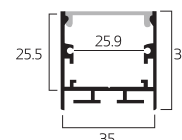
Min order qty: 2

Kit includes:

1 x 4m Aluminium housing,
1 x 4m Opaque diffuser
2 x End-caps & screws,
1 x Suspension kit (ML-ALUSUS-KIT-V3):

INDIVIDUAL SUS KIT INCLUDES:

4 x roof fixing points,
4 x profile fixing points,
4 x 1200mm suspension wire



PLEASE NOTE: This diffuser slides in from one end. Do not use this profile if the diffuser is required to push on. Only strips with pre-soldered connections will fit inside.

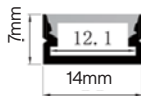
ALU PROFILES (4m)

1407 ALUMINIUM PROFILE

Comes with mounting clips allowing pre-wired strips to be installed saving labour time.

Size:

Length: 4m | Width: 14mm | Height: 7mm



Kit Includes:

- 1 x 4m Aluminium profile
- 1 x 4m Opaque diffuser (ML-ALU-1407-4M)
- 2 x End caps - 1x with hole, 1x without hole (ML-ALU-1407-EC)
- 2 x Mounting brackets (ML-ALU-1407-MB)

Minimum Order: 2 kits

Warranty: 3 years

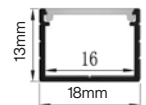


1605 ALUMINIUM PROFILE

Square profile designed to allow smoother diffusion of the internal LED strips.

Size:

Length: 4m | Width: 18mm | Height: 13mm



Kit Includes:

- 1x4m Aluminium profile
- 1x4m Opaque diffuser (ML-ALU-1605-4M)
- 2x End caps- 1x with hole, 1x without hole (ML-ALU-1605-EC)
- 2x Mounting brackets (ML-ALU-1605-MB)

Minimum Order: 2 kits

Warranty: 3 years

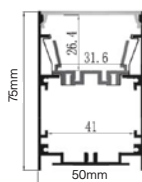


5075 ALUMINIUM PROFILE

Perfect profile for long lengths of custom LED strips installed with ease with a removable tray.

Size:

Length: 4m | Width: 50mm | Height: 75mm



Kit Includes:

- 1x4m Aluminium profile
- 1x4m Opaque diffuser (ML-ALU-5075-4M)
- 4x End caps - 2x with hole, 2x without hole (ML-ALU-5075-EC)
- 4x Mounting brackets (ML-ALU-5075-MB)

Optional: Suspension Kits

Minimum Order: 1 kit

Warranty: 3 years

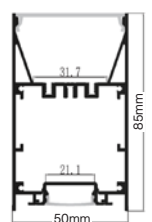


5085 ALUMINIUM PROFILE

This profile has both direct and indirect illumination outlets for top and bottom cover.

Size:

Length: 4m | Width: 50mm | Height: 85mm



Kit Includes:

- 1x4m Aluminium profile
- 1x4m Opaque diffuser (ML-ALU-5085-4M)
- 4x End caps - 2x with hole, 2x without hole (ML-ALU-5085-EC)
- 4x Mounting brackets (ML-ALU-5085-MB)

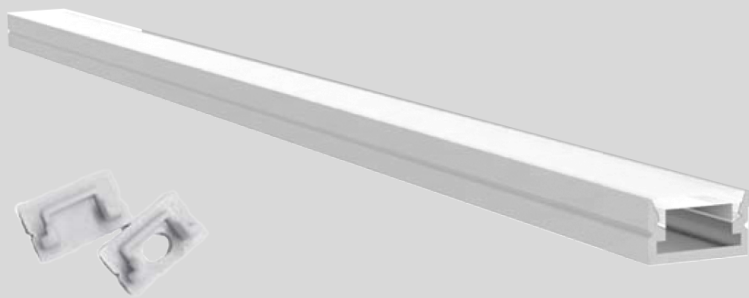
Optional: Suspension Kits

Minimum Order: 2 kits

Warranty: 3 years



1407 ALUMINIUM PROFILE

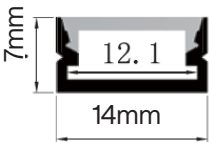


The 1407 is perfect for low profile, rectangular cutouts or slim surface mounted installation requirements comes with mounting clips allowing pre-wired strips to be installed saving labour time. Only available in 4m lengths

CODES

- ML-ALU-1407-4M Profile kit + Opaque Diffuser
- ML-ALU-1407-EC End Caps
- ML-ALU-1407-MB Mounting Brackets

SIZE

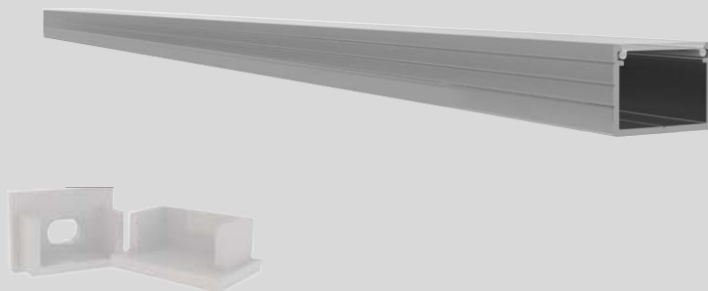


1407 ALUMINIUM PROFILE	
Size:	Length: 4m Width: 14mm Height: 7mm
Kit Includes:	1 x 4m Aluminium profile 1 x 4m Opaque diffuser (ML-ALU-1407-4M) 2 x End caps - 1x with hole, 1x without hole (ML-ALU-1407-EC) 2 x Mounting brackets (ML-ALU-1407-MB)
Minimum Order:	2 Kits
Warranty:	3 years

INSTALLATION



1605 ALUMINIUM PROFILE



The 1605 profile is a more square profile designed to allow for smoother diffusion of the internal LED strips while keeping a compact size. Only available in 4m lengths.

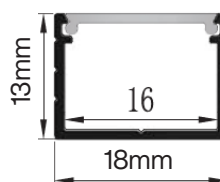
CODES

ML-ALU-1605-4M Profile kit + Opaque Diffuser

ML-ALU-1605-EC End Caps

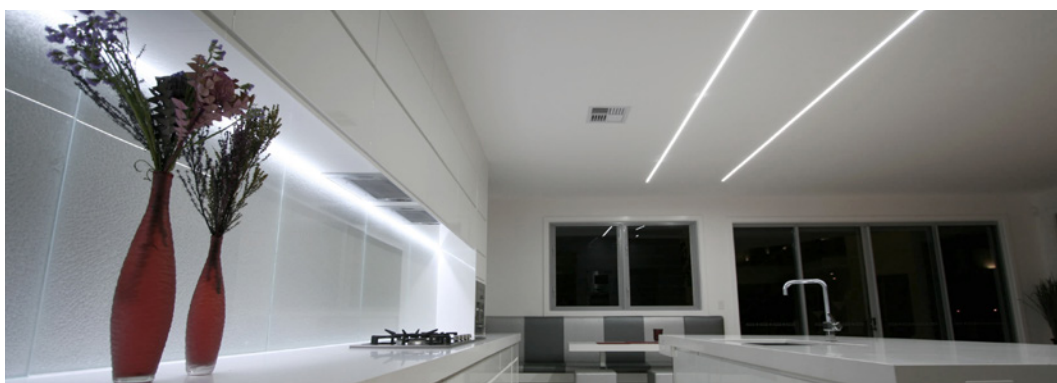
ML-ALU-1605-MB Mounting Bracket

SIZE

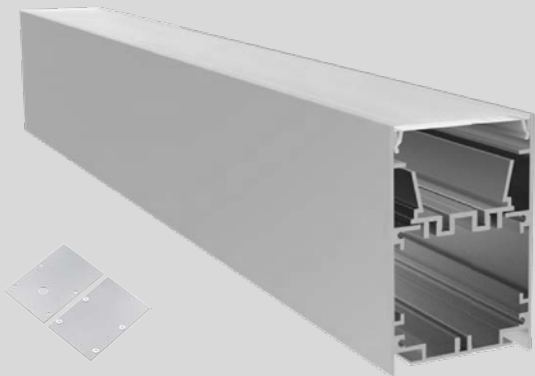


1605 ALUMINIUM PROFILE	
Size:	Length:4m Width:18mm Height: 13mm
Kit Includes:	1x4m Aluminium profile 1x4m Opaque diffuser (ML-ALU-1605-4M) 2x End caps- 1x with hole, 1x without hole (ML-ALU-1605-EC) 2x Mounting brackets (ML-ALU-1605-MB)
Minimum Order:	2 Kits
Warranty:	3 years

INSTALLATION



5075 ALUMINIUM PROFILE

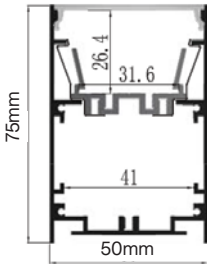


The 5075 is the perfect profile for long lengths of custom LED strips installed with ease. With a removable tray the profile allows for LED strips to be installed on the tray with space for cable or direct fixing to occur behind it and the tray to simply be clipped into place.

CODES

- ML-ALU-5075-4M Profile kit + Opaque Diffuser
- ML-ALU-5075-EC End Caps
- ML-ALU-5075-MB Mounting Bracket

SIZE

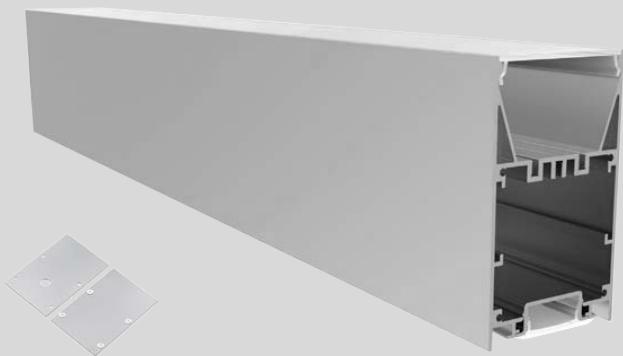


5075 ALUMINIUM PROFILE	
Size:	Length:4m Width:50mm Height: 75mm
Kit Includes:	11x4m Aluminium profile 1x4m Opaque diffuser (ML-ALU-5075-4M) 4x End caps -2x with hole, 2x without hole (ML-ALU-5075-EC) 4x Mounting brackets (ML-ALU-5075-MB)
Optional	Suspension Kits
Minimum Order:	1 Kits
Warranty:	3 years

INSTALLATION



5085 ALUMINIUM PROFILE

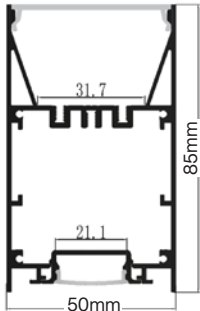


The 5085 profile has both direct and indirect illumination outlets for top and bottom cover. With a large diffuser toward the ground the internal space (31.7mm) allows for multiple LED strips to be installed and the top allows for another LED strip to wash the ceilings creating incredible illumination.

CODES

- ML-ALU-5085-4M Profile kit + Opaque Diffuser
- ML-ALU-5085-EC End Caps
- ML-ALU-5085-MB Mounting Kit

SIZE



5085 ALUMINIUM PROFILE	
Size:	Length:4m Width:50mm Height: 85mm
Kit Includes:	1x4m Aluminium profile 1x4m Opaque diffuser (ML-ALU-5085-4M) 4x End caps -2x with hole, 2x without hole (ML-ALU-5085-EC) 4x Mounting brackets (ML-ALU-5085-MB)
Optional	Suspension Kits
Minimum Order:	1 Kits
Warranty:	3 years

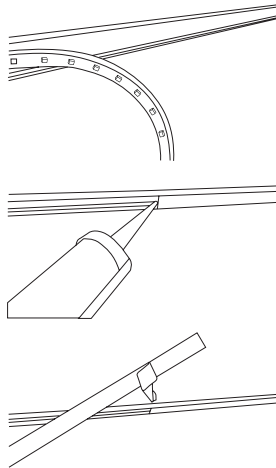
INSTALLATION



INSTALLATION

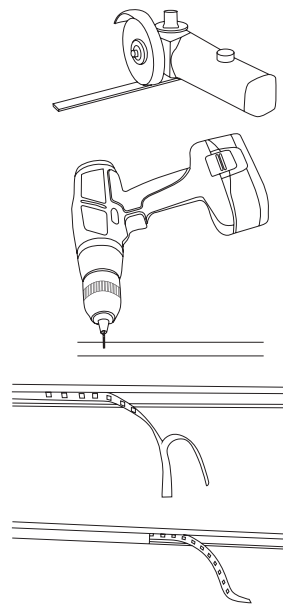
OUTDOOR INSTALLATION

1. Measure and cut the ALU profile and LED strip to the correct size using suitable tools.
2. Pre-drill any mounting holes for the ALU as needed.
3. Mount the ALU using your desired mounting method (wall plugs, adhesive, etc.). Seal any penetrations or joins with an appropriate sealant.
4. Remove the 3M tape backing from the LED strip, clean the ALU with an appropriate cleaner, and place the strip within the ALU gently pressing down to adhere the LED strip to the ALU.
5. Install the diffuser starting at one end and carefully work the diffuser in over the length of the strip.
6. Seal any joins in the strip or diffuser with appropriate sealant. Note any joins should be staggered to maintain weather resistance and smooth lines.



INDOOR INSTALLATION

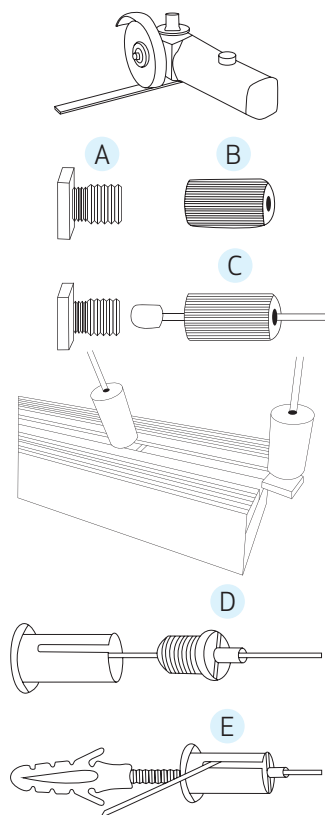
1. Measure and cut the ALU profile and LED strip to the correct size using suitable tools.
2. Pre-drill any mounting holes for the ALU as needed.
3. Mount the ALU using your desired mounting method (wall plugs, adhesive, etc.).
4. Remove the 3M tape backing from the LED strip, clean the ALU with an appropriate cleaner, and place the strip within the ALU gently pressing down to adhere the LED strip to the ALU.
5. Install the diffuser starting at one end and carefully work the diffuser in over the length of the strip.
6. Joins should be staggered to maintain weather resistance and smooth lines.



SUSPENDED ALU HOUSING

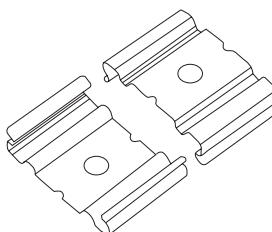
INSTALLATION

1. Mark and cut the profile with diffuser to the desired length using suitable tools (such as 1mm cutting disc on a side grinder).
2. Utilising suspension kits as required, space them evenly along the profile (we suggest 1 per meter).
3. Install the suspension wire (C) into the cylinder base (B) ensuring the welded point fits securely into the base cylinder(B).
4. Install the square bolt head (A) into the profile spaced evenly apart and then spin the base cylinder (B) into the square bolt (A) until it locks tightly onto the profile.
5. Mark the ceiling fixing points directly up from the profile location ensuring all points are evenly spaced.
6. Using suitable fixing methods install the top cylinder (E) firmly into position.
7. Thread the suspension wire through the locking pin (D) being careful not to thread too much.
8. Adjust the length of all suspension cables until they are even and the profile is level.
9. Install the LED strip into position ensuring the input of the strip is at the most suitable end (NOTE: if you prefer to run the cable from the strip through the top of the profile, drill the hole before installing the strip).
10. Run cables from strip up to ceiling or termination point.



SURFACE MOUNTED INSTALLATION

1. Mark and cut the profile with diffuser to the desired length using suitable tools (such as 1mm cutting disc on a side grinder)
2. You can either pre-drill and direct fix the profile or utilise the included surface mounting clips. Always ensure you use the most suitable type of fixing method suited to your installation.
3. Install the LED strip into position ensuring the input of the strip is at the most suitable end (NOTE: if you prefer to run the cable from the strip through the top of the profile, drill the hole before installing the strip).
4. Run cables from strip up to termination point.



LED STRIP & ALUMINIUM HOUSING CUTTING SERVICE



We'll Cut



We'll Solder



We'll Deliver

AVAILABLE
NOW

Contact projects@melec.com.au



FREE **ONSITE WARRANTY**

EXCLUSIVE TO
MEMBERS ONLY



FREE ONSITE WARRANTY FOR 3 YEARS
INCLUDES PARTS & LABOUR

In conjunction with your standard product warranty